

Viega Visign catalogue 2021

Technology, design and comfort
for your bathroom.



NOTE

The challenges for the Sanitary & Heating Industry are great: housing construction and renovation as well as the consistent saving of resources in all areas will be the dominant themes in the coming years. With our product innovations, we make your daily work easier.

Extensive certifications are proof of our high quality standards: The quality management system (according to DIN EN ISO 9001) is certified just like the energy management system (according to DIN EN ISO 50001) and the environmental management system (according to DIN EN ISO 14001).

The illustrations and information contained in this document are not binding. We reserve the right to introduce progressive improvements. Material data refer to those parts that come into contact with water. Dimensions are in mm or inches. PU = packaging unit.

The term 'Viega' as used on the website may refer to a Viega group company or to the Viega brand, depending on the context. The individual companies of the Viega group are legally separate units and as such they operate independently. Therefore the term 'Viega' does not necessarily refer to any particular company.

As of July 2021



CONTENT

4

Viega Prevista Dry

12

Viega Prevista Dry Plus

18

Viega Prevista Pure

20

Viega Visign flush plates

38

Viega Visign urinal flush plates

42

Viega Advantix Cleviva

50

Viega Advantix shower channels



56

Viega Advantix Vario



66

Viega Advantix bathroom and floor drains



72

Viega bath drains

84

Viega shower tray sets

86

Viega drains for washbasins

Viega Prevista Dry

THE NEXT GENERATION OF PRE-WALL TECHNOLOGY FOR SUCCESSFUL BATHROOM PLANNING.

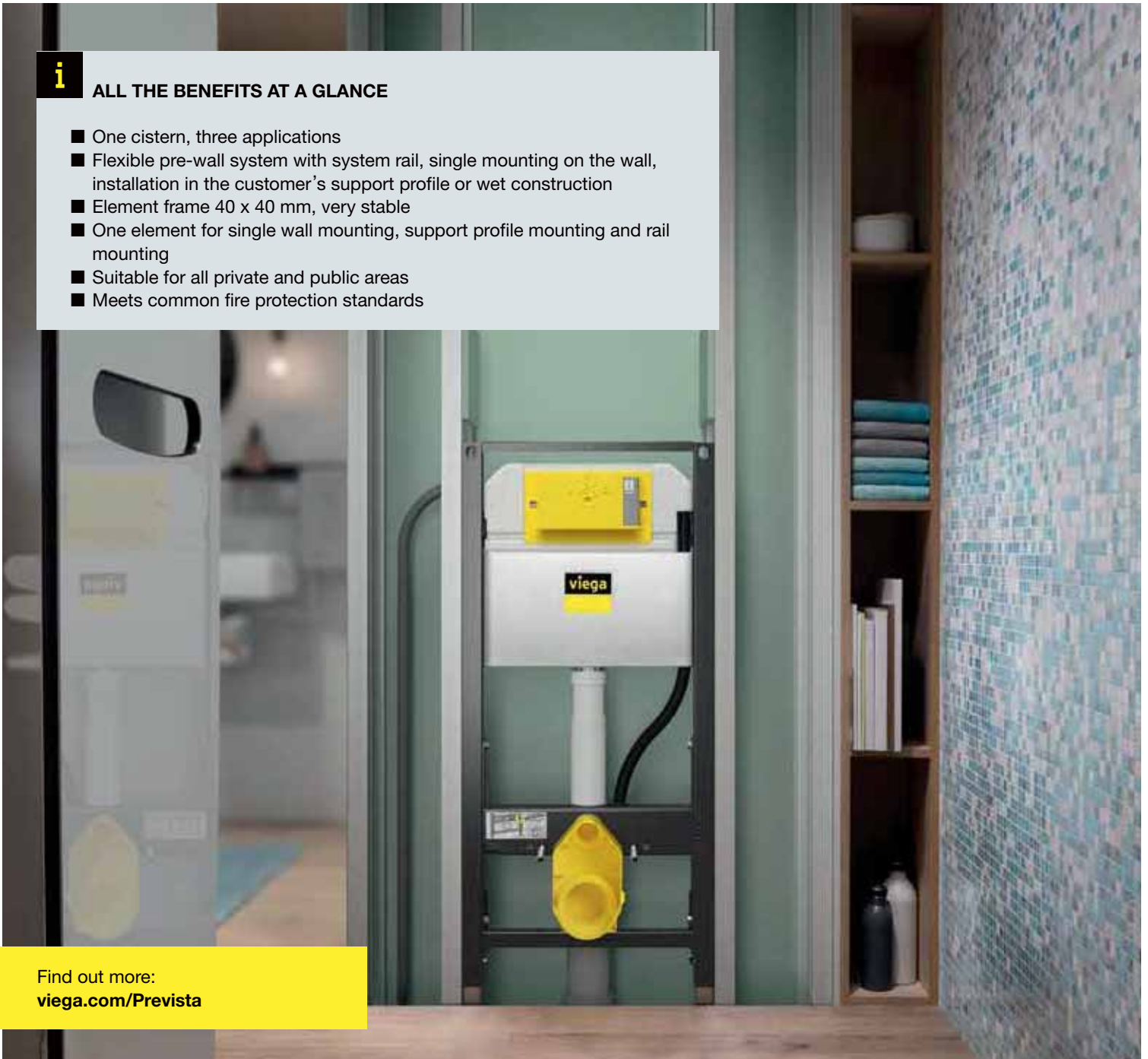
Easy installation, maximum design freedom: We poured all our experience and your ideas into the development of our new pre-wall system. The result is Viega Prevista: the new generation of pre-wall technology. It will save on working time, and offers you and your customers optimum levels of comfort.

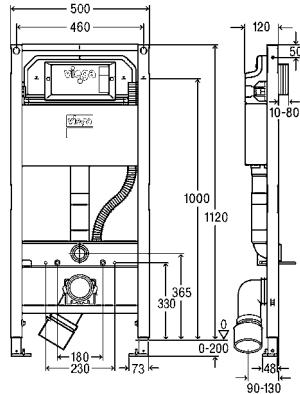
i

ALL THE BENEFITS AT A GLANCE

- One cistern, three applications
- Flexible pre-wall system with system rail, single mounting on the wall, installation in the customer's support profile or wet construction
- Element frame 40 x 40 mm, very stable
- One element for single wall mounting, support profile mounting and rail mounting
- Suitable for all private and public areas
- Meets common fire protection standards

Find out more:
viega.com/Prevista





**Prevista Dry WC element with shower WC connection
1120 mm**

- for pre-wall mounting please order separately: Prevista Dry fixing set model 8570.36
- in addition optional available Prevista Dry support set model 8570.37
- steel, PE
- compatible with all WC flush plates for Prevista, integration in Prevista Dry Plus, dual flush technology, barrier-free

Model 8522

CH	W	PU	Article
1120	500	1/15	771 980

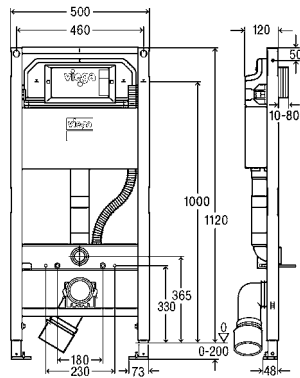


**Prevista Dry WC element with shower WC connection
1120 mm**

- for pre-wall mounting please order separately: Prevista Dry fixing set model 8570.36
- steel, PE
- compatible with all WC flush plates for Prevista, integration in Prevista Dry Plus, dual flush technology, barrier-free

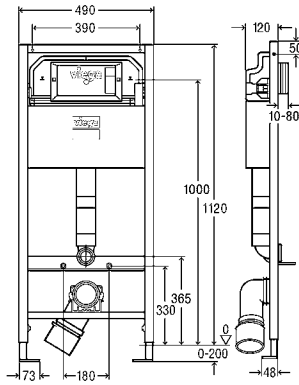
Model 8522.45

	PU	Article
	1	802 615



*Products comply to PUB requirements (Public Utilities Board – approval for Singapore)





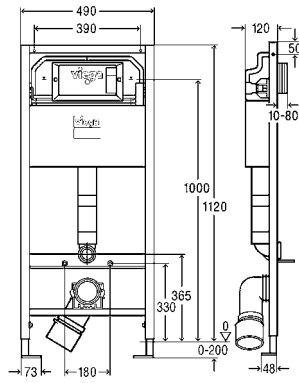
**Prevista Dry WC element
building project version
1120x490 mm**

- not suitable for Prevista Dry Plus
- for pre-wall mounting please order separately: Prevista Dry fixing set model 8180.73
- steel, PE
- compatible with all WC flush plates for Prevista, dual flush technology

Model 8524

CH	W	PU	Article
1120	490	1/15	771 973

HA = Height-adjustable

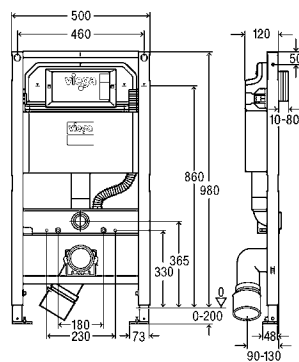


**Prevista Dry WC element
building project version
1120x490 mm**

- not suitable for Prevista Dry Plus
- for pre-wall mounting please order separately: Prevista Dry fixing set model 8180.73
- steel, PE
- compatible with all WC flush plates for Prevista, dual flush technology

Model 8524.45

	PU	Article
	1	802 622

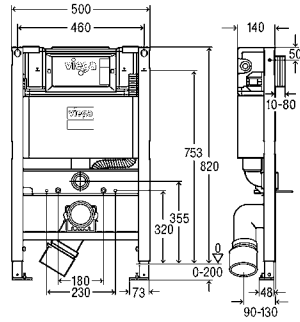


**Prevista Dry WC element with shower WC connection
980 mm**

- for pre-wall mounting please order separately: Prevista Dry fixing set model 8570.36
- in addition optional available Prevista Dry support set model 8570.37
- steel, PE
- compatible with all WC flush plates for Prevista, integration in Prevista Dry Plus, dual flush technology, barrier-free

Model 8530

CH	W	PU	Article
980	500	1/15	772 000

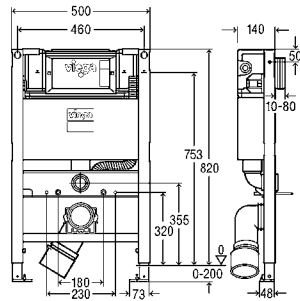


**Prevista Dry WC element with shower WC connection
820 mm**

- for pre-wall mounting please order separately: Prevista Dry fixing set model 8570.36
- in addition optional available Prevista Dry support set model 8570.37
- steel, PE
- compatible with all WC flush plates for Prevista, integration in Prevista Dry Plus, dual flush technology, flush actuation from front or top, barrier-free

Model 8533

CH	W	PU	Article
820	500	1/15	772 017



**Prevista Dry WC element with shower WC connection
820 mm**

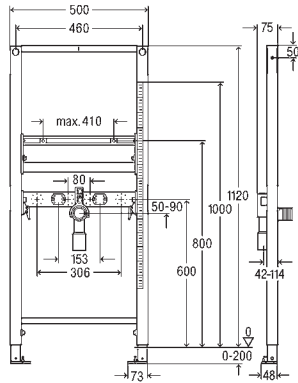
- for pre-wall mounting please order separately: Prevista Dry fixing set model 8570.36
- steel, PE
- compatible with all WC flush plates for Prevista, integration in Prevista Dry Plus, dual flush technology, flush actuation from front or top, barrier-free

Model 8533.45

CH	W	PU	Article
820	500	1	802 608







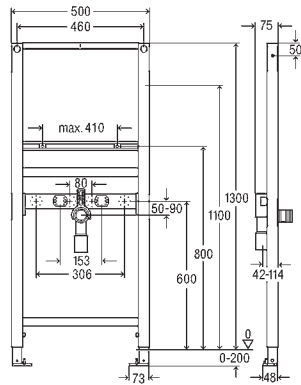
**Prevista Dry washbasin element
1120 mm**

height-adjustable connections

- for WB with single-hole fitting
- for pre-wall mounting please order separately: Prevista Dry fixing set model 8570.36
- steel
- integration in Prevista Dry Plus

Model 8535

CH	W	PU	Article
1120	500	1/10	776 183



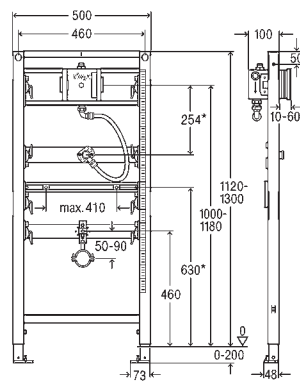
**Prevista Dry washbasin element
fixed connections**

1120 mm

- for WB with single-hole fitting
- for pre-wall mounting please order separately: Prevista Dry fixing set model 8570.36
- steel
- integration in Prevista Dry Plus

Model 8538

CH	W	PU	Article
1120	500	1/10	789 329



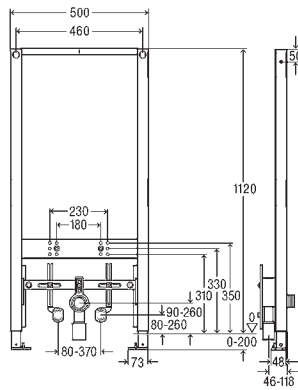
**Prevista Dry urinal element
universal water connection**

1120-1300 mm

- for universal water connection
- for pre-wall mounting please order separately: Prevista Dry fixing set model 8570.36
- steel
- compatible with all urinal flush plates for Prevista, integration in Prevista Dry Plus

Model 8560.32

CH	W	PU	Article
1120-1300	500	1/12	776 411

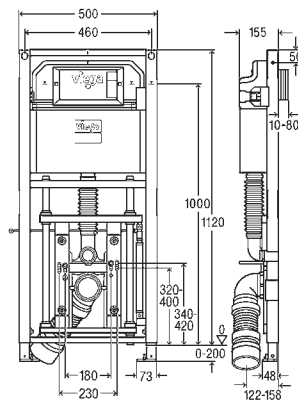


**Prevista Dry bidet element
1120 mm**

- for wall-hung bidet
- for pre-wall mounting please order separately: Prevista Dry fixing set model 8570.36
- steel
- integration in Prevista Dry Plus

Model 8568

CH	W	PU	Article
1120	500	1/10	776 442



**Prevista Dry WC element
ceramic height individually-adjustable at
the touch of a button by the user
1120 mm**

- for pre-wall mounting please order separately: Prevista Dry fixing set model 8570.36
- only in connection with WC cover plate for Prevista model 8570.39
- steel, PE
- compatible with all WC flush plates for Prevista, integration in Prevista Dry Plus, ceramic height individually-adjustable at the touch of a button by the user, dual flush technology, barrier-free
- without: cover plate

Model 8521.32

CH	W	PU	Article
1120	500	1/4	772 024





Prevista Dry Fixing set

- for single mounting on solid wall
- suitable for Prevista Dry WC element model 8524, Prevista Dry washbasin element model 8539
- depth-adjustable up to 200 mm

Model 8180.73

M	QS	PU	Article
10	2	1	678 630

QS = Quantity per set



Prevista Dry fixing set universal

- for fixing of the Prevista Dry elements, single mounting direct on the structure, corner mounting on solid or metal support profiles
- depth-adjustable 120–200 mm, fixing possibilities for cladding

Model 8570.36

QS	PU	Article
2	1	776 619

QS = Quantity per set



Prevista Dry fixing set

- for single mounting of Prevista Dry elements on a solid wall

Model 8573

M	QS	PU	Article
8	2	1	776 626

QS = Quantity per set

Viega Prevista Dry Plus

CUSTOM INSTALLATION ON RAILS.

When it comes to planning the custom design of a bathroom, Viega Prevista Dry Plus enables even unusual wishes to be met. The rail system provides for a high degree of design freedom while also being quick to install.



i

ALL THE BENEFITS AT A GLANCE

- Pre-wall elements, rails and connectors in one system for half and full room height installation walls
- Rail: 5 m long; connectors: trapezoidal, can be mounted at a 90° or 45° angle on the open or closed side of the rail
- The newly developed element base is easy to position and click in place on the mounting rail
- Elements are installed using 2 connectors on the rail.
- Little need for use of tools (folding rule, spirit level, size 13 spanner, hexagon socket spanner)
- Silent shortening of the rail by rail punch
- Wide range of design options, quick installation

Find out more:
[viega.com/Prevista](https://www.viega.com/Prevista)



COMPONENTS



Prevista Dry Plus mounting rail

- for partially room-high and room-high pre-wall and partition wall construction
- galvanised steel
- continuously pre-punched long hole every 30 cm for wall, floor or ceiling mounting

Model 8401

L	H	D	PU	Article
5000	40	40	4	471 781



Prevista Dry Plus complete package

- for building of a partially room-high or room-high partition or pre-wall construction
- connector made of galvanised steel for the connection of mounting rail at 45° or 90°, fixing material for wall, floor or ceiling mounting of mounting rails, compensating material for uneven walls, screws (self-drilling) for plasterboard cladding panel

Model 8400

A [m ²]	PU	Article
1	114	471 545
3	54	471 750
5	54	471 767
10	45	471 774



Prevista Dry Plus rail connector

- for connection of mounting rail at 45° or 90°
- suitable for Prevista Dry Plus mounting rail model 8401
- galvanised steel
- completely pre-assembled

Model 8410

	PU	Article
	10	471 798



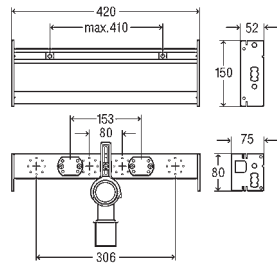
Prevista Dry Plus rail punch

- for burr-free shortening and punching the mounting rail
- suitable for Prevista Dry Plus mounting rail model 8401
- powder-coated steel

Model 8420

	PU	Article
	1	471 866

MODULES/FITTING HOLDERS



Prevista Dry Plus washbasin module

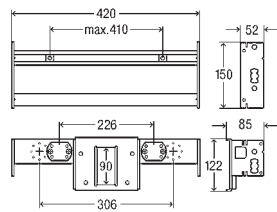
- for WB with single-hole fitting
- steel

Equipment

height-adjustable and sound-insulated fixing for Viega wall plates, fixing material for module and ceramic, cuttable drain elbow DN40/50 with rubber nipple DN50/30

Model 8545

W	PU	Article
420	1/40	776 299



Prevista Dry Plus washbasin module barrier-free

- for WB with single-hole fitting
- steel

Equipment

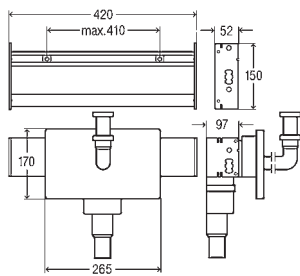
height-adjustable and sound-insulated fixing for Viega wall plates, universal concealed odour trap holder, fixing material for module and ceramic

Note

Universal concealed odour trap holder for securing: Concealed odour trap with chrome-plated cover plate (5633.1), concealed odour trap with white cover plate (model 5633.2).

Model 8545.31

W	PU	Article
420	1	776 305



Prevista Dry Plus washbasin module with concealed connection box

- for WB with single-hole fitting
- steel

Equipment

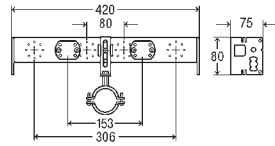
fixing height-adjustable, concealed connection box fixing material, height-adjustable odour trap, rubber nipple DN40/30, 2 wall lead-ins, 2 corner valves G1½-G¾, 2 straight double screw fittings with compression fittings for copper pipe d10, 2 chrome-plated connection pipes d10, chrome-plated brass drain elbow 300 mm, chrome-plated plastic cover plate for concealed connection box, fixing material for module and ceramic

Technical data

Max. load 150 kg

Model 8545.32

W	PU	Article
420	1/40	776 312



Prevista Dry Plus fitting holder for sink

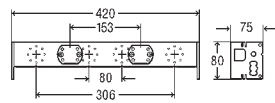
■ steel

Equipment

sound-insulated fixing for Viega wall plates, fixing material for module and ceramic

Model 8555

W	PU	Article
420	1	776 329



Prevista Dry Plus fitting holder for wall-mounted fitting reinforced

■ steel

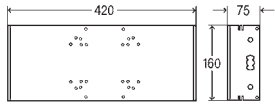
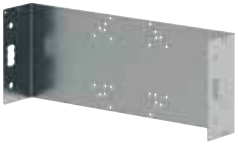
Equipment

sound-insulated fixing for Viega wall plates, fixing material

Model 8555.31

W	PU	Article
420	1	776 336





Prevista Dry Plus fitting holder for concealed fitting

■ steel

Equipment

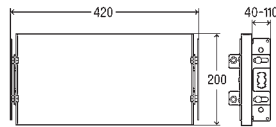
fixing material for module

Note

The fitting holder is suitable for following concealed fittings: Grohe "Rapido E", Hansa "HANSAVAROX", Hansgrohe "iBox", Ideal Standard "EASY-Box", Keuco "Flexx Boxx" VIGOUR "VIGOUR-BOX VIGUPK", DIANA "Flexx.Boxx2", sam "flexbox", sanibel "sanibel-FLEXX.BOXX", KLUDI "FLEXX.BOXX".

Model 8555.34

W	PU	Article
420	1	776 367



Prevista Dry Plus fitting holder for concealed fitting depth-adjustable

■ for concealed fitting, concealed shut-off valve, concealed domestic water meter unit

■ steel, wood

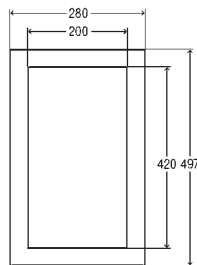
■ setting range 40–110 mm

Equipment

waterproof plywood panel, fixing material for module

Model 8555.38

W	PU	Article
420	1	776 374



Prevista Dry Plus plywood panel

■ for sanitary objects, for support handles

■ waterproof

Note

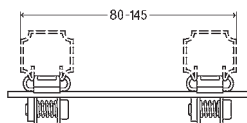
In the Prevista Dry Plus system the fixing of support arms and shower seats is also possible.

Model 8570.33

W	H	T	PU	Article
280	497	30	1	776 503



ACCESSORIES



Prevista Dry Plus parallel connector

- suitable for Prevista Dry Plus mounting rail model 8401
- galvanised steel

Model 8414

ID	PU	Article
80-145	5	747 237

ID = Installation depth

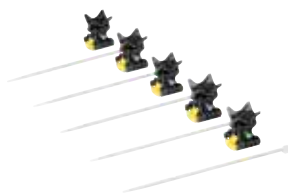


Prevista Dry Plus mounting elbow

- for wall and floor connection of pre-fabricated wall
- galvanised steel

Model 8415

L1	L2	PU	Article
50	75	5	485 061
50	140	5	726 300



Prevista Dry Plus pipe support

- for plastic pipeline d16-20, maximum surrounding insulation 13 mm
- suitable for Prevista Dry Plus mounting rail model 8401
- plastic

Equipment

pipe holder, cable tie

Model 8416

QS	PU	Article
5	1	798 468

QS = Quantity per set



Prevista Dry Plus mounting joint

- for continuous angular adjustment from 0° to 180°, fixing of mounting rail to sloping roof
- suitable for Prevista Dry Plus rail connector model 8410
- galvanised steel

Model 8411

PU	Article
10	471 804

Viega Prevista Pure

FIRST CHOICE IN WET CONSTRUCTION: PREVISTA PURE.

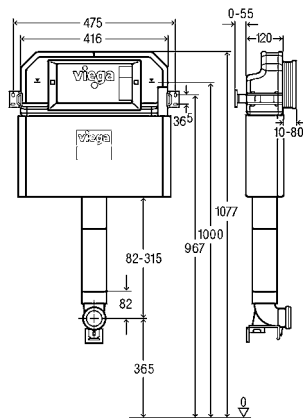
State-of-the-art pre-wall technology combined with tried and proven methods: With Prevista Pure and the new cistern, custom, high-grade, durable wet construction installations can be created.



ALL THE BENEFITS AT A GLANCE

- Pre-wall blocks perfectly matched to wet construction requirements
- WC blocks optionally in 1,077 mm and 820 mm heights
- Flexible depth adjustment of WC blocks
- The 820 mm high WC block can be additionally be operated from the front or from above.
- Wide variety of flush plates including for wet construction

Find out more:
[viega.com/Prevista](https://www.viega.com/Prevista)

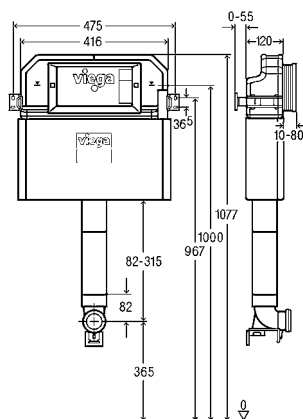


Concealed cistern 3H

- for floor-standing WC, immurement and encircling wall
- compatible with all WC flush plates for Prevista, flush actuation from front, dual flush technology

Model 8502

	PU	Article
	1/26	771 904

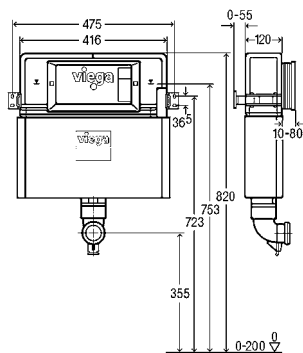


Concealed cistern 3H

- for floor-standing WC, immurement and encircling wall
- compatible with all WC flush plates for Prevista, flush actuation from front, dual flush technology

Model 8502.45

	PU	Article
	1/20	803 353

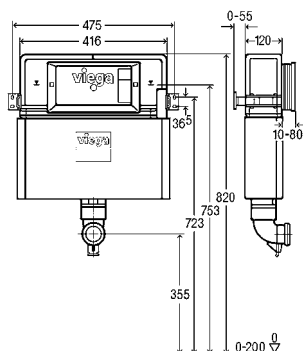


Concealed cistern 3L

- for floor-standing WC, immurement and encircling wall
- compatible with all WC flush plates for Prevista, flush actuation from front or top, dual flush technology

Model 8504

	PU	Article
	1	801 090



Concealed cistern 3L

- for floor-standing WC, immurement and encircling wall
- compatible with all WC flush plates for Prevista, flush actuation from front or top, dual flush technology

Model 8504.45

	PU	Article
	1	803 360

*Products comply to PUB requirements (Public Utilities Board – approval for Singapore)

Viega Visign flush plates

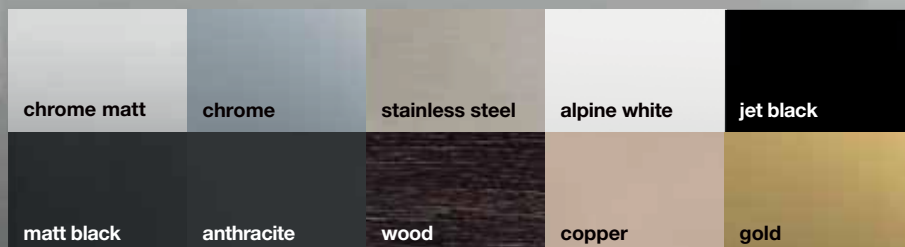
DESIGN THAT'S IN ITS ELEMENT ON EVERY VIEGA PRE-WALL.

Featuring clean lines, flawless contours and beautifully tactile surfaces, the Visign for More and Visign for Style flush plate ranges are standout pieces of design. They are available in a host of materials and colours inspired by places across the globe, enabling the range to match all the latest trends in ceramic fittings and tiles. Visign flush plates are compatible with all Viega Prevista flush cisterns and pre-wall systems. Behind their stunning exterior, they conceal strikingly intelligent technical features.

For all
Prevista
concealed
cisterns

DIVERSE SURFACES FOR EVERY ROOM

Over 50 high-quality design variants that can be installed on every Viega Prevista pre-wall element.



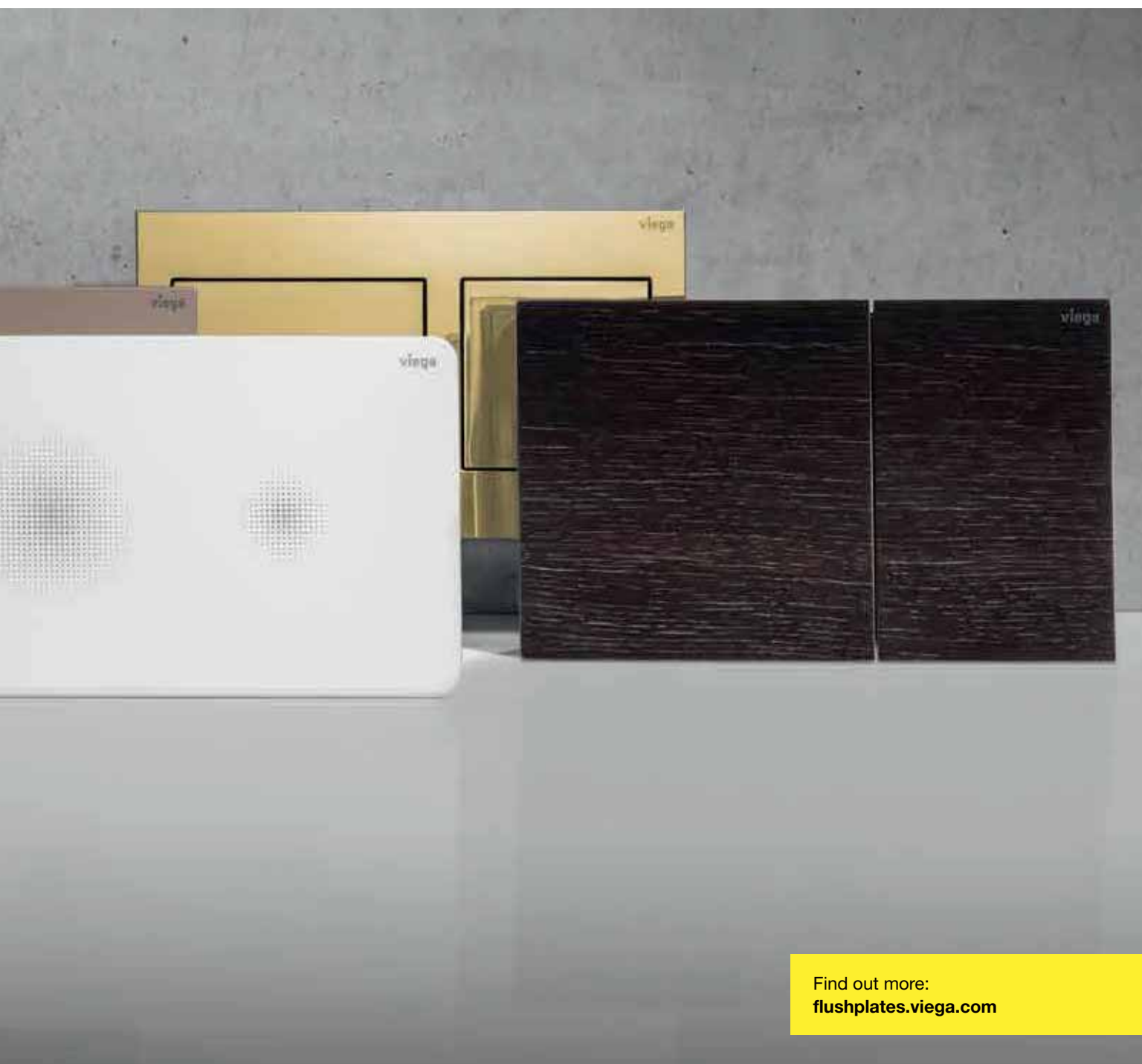
AWARD-WINNING DESIGN



reddot winner 2020



reddot award 2019 winner



Find out more:
flushplates.viega.com

Visign for Style

ROUNDED OFF, CLEAR CUT.

The Visign for Style flush plates impress with their ease of use and quality while demonstrating that cool design is no longer an expensive luxury.



Our online flush plate configurator is an easy way to help you make the decision that is right for you:



flushplates.viega.com

VISIGN FOR STYLE 20



Article 773 793



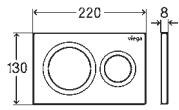
Article 773 786



Article 773 779



Article 796 389



**WC flush plate for Prevista
Visign for Style 20**

■ manual flush actuation from front or top, dual flush technology

Equipment

fixing frame, actuating rod set, fixing bolt

Model 8610.1

Cover plate plastic	Pressure piece plastic	PU	Article
alpine white	alpine white	1	773 793
chrome matt	chrome matt	1	773 786
chrome-plated	chrome-plated	1	773 779
black matt	black matt	1	796 389

VISIGN FOR STYLE 21



Article 773 250



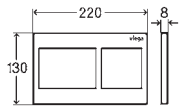
Article 773 243



Article 773 236



Article 801 724



**WC flush plate for Prevista
Visign for Style 21**

■ manual flush actuation from front or top, dual flush technology

Equipment

fixing frame, actuating rod set, fixing bolt

Model 8611.1

Cover plate plastic	Pressure piece plastic	PU	Article
alpine white	alpine white	1	773 250
chrome matt	chrome matt	1	773 243
chrome-plated	chrome-plated	1	773 236
black matt	black matt	1	801 724

Visign for Style 23
SLIMLINE.



VISIGN FOR STYLE 23



Article 773 151



Article 773 069



Article 773 052



Article 801 731



Article 773 175



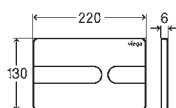
Article 773 199



Article 773 182



Article 773 229



**WC flush plate for Prevista
Visign for Style 23**

- manual flush actuation from front or top, dual flush technology

Equipment

fixing frame, actuating rod set, fixing bolt

Model 8613.1

Cover plate	Pressure piece	PU	Article
alpine white plastic	alpine white plastic	1	773 151
chrome matt plastic	chrome matt plastic	1	773 069
chrome-plated plastic	chrome-plated plastic	1	773 052
plastic black matt	plastic black matt	1	801 731
plastic polished black	plastic polished black	1	773 175
plastic stainless steel coloured brushed	plastic stainless steel coloured brushed	1	773 168
acrylic polished black	plastic black matt	1	773 199
acrylic polished black	plastic stainless steel coloured brushed	1	773 182
special colour plastic	special colour plastic	1	773 205 ¹
metallic coloured plastic	metallic coloured plastic	1	773 212 ¹
gold-plated plastic	gold-plated plastic	1	773 229 ²

¹ Delivery time for customised range: 8 weeks plus shipping; non-returnable!

² Delivery time for customised range: 10 weeks plus shipping; non-returnable!

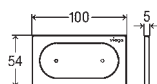
VISIGN FOR STYLE 23 – REMOTE FLUSH ACTUATION



Article 773 083



Article 773 076



**WC remote flush actuation for Prevista
Visign for Style 23**

electronic

- for all Prevista concealed cisterns
- in combination with installation set model 8640.14
- only in connection with accessory set model 8655.11
- manual flush actuation, dual flush technology, with Viega Hygiene function

Equipment

fixing frame

Technical data

Small flush volume factory setting approx. 3 l

Large flush volume factory setting approx. 6 l

Note

Electronic accessory set has to be ordered separately.

Suitable for installation in furniture.

Note regarding Viega Hygiene function: to support the intended operation after a user detection, different hygiene time intervals and hygiene flush volumes can be set. Programmable time intervals: 1 h, 12 h, 24 h, 72 h, 168 h. Programmable flush volumes: 3 l, 7.5 l.

Model 8640.1

Cover plate plastic	Pressure piece plastic	PU	Article
alpine white	alpine white	1	773 083
chrome-plated	chrome-plated	1	773 076

VISIGN FOR STYLE 24



Article 773 281



Article 773 274



Article 773 267



Article 801 748



Article 773 304



Article 773 298



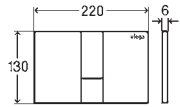
Article 773 311



Article 773 328



Article 773 359



**WC flush plate for Prevista
Visign for Style 24**

- for all Prevista concealed cisterns
- manual flush actuation from front or top, dual flush technology

Equipment

fixing frame, actuating rod set, fixing bolt

Model 8614.1

Cover plate	Pressure piece	PU	Article
alpine white plastic	alpine white plastic	1	773 281
chrome matt plastic	chrome matt plastic	1	773 274
chrome-plated plastic	chrome-plated plastic	1	773 267
plastic black matt	plastic black matt	1	801 748
plastic polished black	plastic polished black	1	773 304
plastic stainless steel coloured brushed	plastic stainless steel coloured brushed	1	773 298
acrylic polished black	plastic black matt	1	773 311
acrylic polished black	plastic stainless steel coloured brushed	1	773 328
special colour plastic	special colour plastic	1	773 335¹
metallic coloured plastic	metallic coloured plastic	1	773 342¹
gold-plated plastic	gold-plated plastic	1	773 359²

¹ Delivery time for customised range: 8 weeks plus shipping; non-returnable!

² Delivery time for customised range: 10 weeks plus shipping; non-returnable!

Visign for Style 24

THE MIDDLE WAY.



Visign for More

HIGH-GRADE MATERIALS FOR EVERY TASTE.

From veneered wood finishes, through brushed stainless steel, to glass and high-grade plastic: the new Visign flush plates come in a wide variety of different materials. They offer the ideal design for every taste, as well as featuring state-of-the-art technology. All plates are compatible with the Prevista cistern, and can mostly be installed without the use of tools.



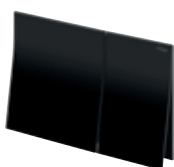
VISIGN FOR MORE 200



Article 773 601



Article 773 595



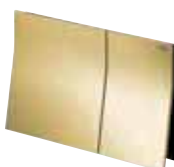
Article 773 588



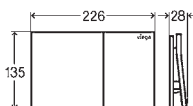
Article 773 571



Article 773 564



Article 773 632



WC flush plate for Prevista

Visign for More 200

- for all Prevista concealed cisterns
- manual flush actuation from front, dual flush technology

Equipment

fixing frame, actuating rod set, fixing bolt

Model 8620.1

Cover plate	Pressure piece	PU	Article
plastic polished black	metal copper/ gold-coloured matt	1	773 601
plastic polished black	metal matt black	1	773 595
chrome-plated plastic	glass black	1	773 588
chrome-plated plastic	glass white	1	773 571
plastic polished black	wood stained oak	1	773 564
plastic polished black	special colour metal	1	773 618¹
plastic polished black	metal metallic colour	1	773 625¹
plastic polished black	gold-plated metal	1	773 632²

¹) Delivery time for customised range: 8 weeks plus shipping; non-returnable!

²) Delivery time for customised range: 10 weeks plus shipping; non-returnable!

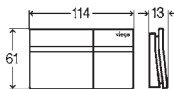
VISIGN FOR MORE 200 – REMOTE FLUSH ACTUATION



Article 773 106



Article 773 090



WC remote flush actuation for Prevista

Visign for More 200

electronic

- for all Prevista concealed cisterns
- in combination with installation set model 8640.14
- only in connection with accessory set model 8655.11
- manual flush actuation, dual flush technology, with Viega Hygiene function

Equipment

fixing frame

Technical data

Small flush volume factory setting approx. 3 l

Large flush volume factory setting approx. 6 l

Note

Electronic accessory set has to be ordered separately.

Suitable for installation in furniture.

Note regarding Viega Hygiene function: to support the intended operation after a user detection, different hygiene time intervals and hygiene flush volumes can be set. Programmable time intervals: 1 h, 12 h, 24 h, 72 h, 168 h. Programmable flush volumes: 3 l, 7.5 l.

Model 8641.1

Pressure piece	PU	Article
glass black	1	773 106
glass white	1	773 090

Note regarding electronic flush plates

Note regarding Viega Hygiene function: to support the intended operation after a user detection, different hygiene time intervals and hygiene flush volumes can be set. Programmable time intervals: 1 h, 12 h, 24 h, 72 h, 168 h. Programmable flush volumes: 3 l, 7.5 l.



Visign for More 201 is available with an illuminated installation frame as an option.



VISIGN FOR MORE 201



Article 773 526



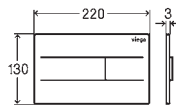
Article 773 519



Article 773 502



Article 773 557



WC flush plate for Prevista Visign for More 201 electronic

- for all Prevista concealed cisterns
- in addition optional available WC installation frame for Prevista model 8650.1
- only in connection with accessory set model 8655.11
- manual flush actuation from front or top, dual flush technology, with Viega Hygiene function

Equipment

fixing frame, actuating rod set, fixing bolt

Technical data

Small flush volume factory setting approx. 3 l

Large flush volume factory setting approx. 6 l

Note

Electronic accessory set has to be ordered separately.

Model 8621.1

Cover plate	Pressure piece	PU	Article
brushed stainless steel	brushed stainless steel	1	773 526
stainless steel black matt	stainless steel black matt	1	773 519
stainless steel polished white	stainless steel polished white	1	773 502
special colour stainless steel	special colour stainless steel	1	773 533¹
metallic coloured stainless steel	metallic coloured stainless steel	1	773 540¹
gold-plated stainless steel	gold-plated stainless steel	1	773 557²

¹) Delivery time for customised range: 8 weeks plus shipping; non-returnable!

²) Delivery time for customised range: 10 weeks plus shipping; non-returnable!

VISIGN FOR MORE 202



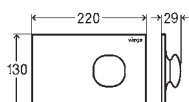
Article 773 458



Article 773 465



Article 773 496



WC flush plate for Prevista

Visign for More 202

electronic

with LED lightning

- for all Prevista concealed cisterns
- only in connection with accessory set model 8655.11
- manual flush actuation from front or top, dual flush technology, with Viega Hygiene function, with permanent LED lighting

Equipment

fixing frame, actuating rod set, fixing bolt

Technical data

Small flush volume factory setting approx. 3 l

Large flush volume factory setting approx. 6 l

Note

Electronic accessory set has to be ordered separately.

Model 8622.1

Cover plate	Pressure piece	PU	Article
metal polished white	metal polished white	1	773 458
metal polished white	chrome-plated metal	1	773 465
special colour metal	special colour metal	1	773 472¹
metal metallic colour	metal metallic colour	1	773 489¹
gold-plated metal	gold-plated metal	1	773 496²

¹) Delivery time for customised range: 8 weeks plus shipping; non-returnable!

²) Delivery time for customised range: 10 weeks plus shipping; non-returnable!





VISIGN FOR MORE 204



Article 773 663



Article 773 656



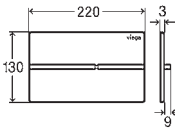
Article 773 649



Article 773 670



Article 773 700



**WC flush plate for Prevista
Visign for More 204
electronic**

- for all Prevista concealed cisterns
- in addition optional available WC installation frame for Prevista model 8650.1
- only in connection with accessory set model 8655.11
- manual flush actuation from front or top, dual flush technology, with Viega Hygiene function

Equipment

fixing frame, actuating rod set, fixing bolt

Technical data

Small flush volume factory setting approx. 3 l

Large flush volume factory setting approx. 6 l

Note

Electronic accessory set has to be ordered separately.

Model 8624.1

Cover plate	Pressure piece	PU	Article
brushed stainless steel	brushed metal	1	773 663
stainless steel black matt	metal matt black	1	773 656
polished stainless steel	chrome-plated metal	1	773 649
stainless steel black matt	brushed metal	1	773 670
special colour stainless steel	special colour metal	1	773 687¹
metallic coloured stainless steel	metal metallic colour	1	773 694¹
gold-plated stainless steel	gold-plated metal	1	773 700²

¹) Delivery time for customised range: 8 weeks plus shipping; non-returnable!

²) Delivery time for customised range: 10 weeks plus shipping; non-returnable!



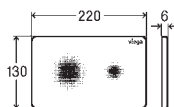
Visign for Style and Visign for More sensitive MAXIMUM HYGIENE IN THE BATHROOM.

Assuring exemplary cleanliness, easy to maintain, and attractive in design: The Viega Visign for More 205 sensitive and Visign for Style 25 sensitive touchless flush plates provide supreme flushing comfort and convenience in any bathroom. Both flush plates activate flushing when a hand is held close in front of the desired flush function on the plate. That means user enjoy maximum flushing comfort and convenience, while also avoiding germs and bacteria. The flush plates are as clean and durable as they are attractively designed: All surfaces are very easy to clean, and will retain their positive attributes for decades to come.

VISIGN FOR STYLE 25 SENSITIVE



Article 774 356



WC flush plate for Prevista

Visign for Style 25 sensitive

- for all Prevista concealed cisterns
- only in connection with accessory set model 8655.11
- printed with noctilucent finish
- touchless flush actuation from front or top, dual flush technology, with Viega Hygiene function

Equipment

fixing frame, actuating rod set, fixing bolt

Technical data

Small flush volume factory setting approx. 3 l

Large flush volume factory setting approx. 6 l

Note

Electronic accessory set has to be ordered separately.

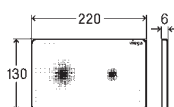
Model 8615.1

Cover plate	PU	Article
alpine white plastic	1	774 356

VISIGN FOR MORE 205 SENSITIVE



Article 774 363



WC flush plate for Prevista

Visign for More 205 sensitive

with LED lightning

- for all Prevista concealed cisterns
- only in connection with accessory set model 8655.11
- chrome-plated frame
- touchless flush actuation from front or top, dual flush technology, with Viega Hygiene function

Equipment

fixing frame, actuating rod set, fixing bolt

Technical data

Small flush volume factory setting approx. 3 l

Large flush volume factory setting approx. 6 l

Note

Electronic accessory set has to be ordered separately.

Model 8625.1

Cover plate	PU	Article
glass black	1	774 363



Visign for Life THE CLASSIC.

The Visign for Life flush plates impress with a clearly defined design and robust actuation mechanism. They are made of plastic, and are suitable for flush actuation from the front or from above. Featuring the dual-volume flush system for either low or high flush volume, the flush plates are exemplary in terms of their water consumption.

VISION FOR LIFE 5



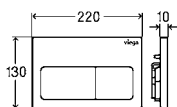
Article 773 731



Article 773 724



Article 773 717



WC flush plate for Prevista

Visign for Life 5

- for all Prevista concealed cisterns
- for revision shaft depth > 60 mm please order separately: extension set model 8570.60
- manual flush actuation from front or top, dual flush technology

Equipment

actuating rod set, fixing material

Model 8601.1

Cover plate	Pressure piece	PU	Article
alpine white plastic	alpine white plastic	1	773 731
chrome matt plastic	chrome matt plastic	1	773 724
chrome-plated plastic	chrome-plated plastic	1	773 717

VISION FOR LIFE 6



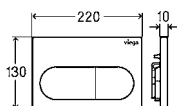
Article 773 762



Article 773 755



Article 773 748



WC flush plate for Prevista

Visign for Life 6

- for all Prevista concealed cisterns
- for revision shaft depth > 60 mm please order separately: extension set model 8570.60
- manual flush actuation from front or top, dual flush technology

Equipment

actuating rod set, fixing material

Model 8602.1

Cover plate	Pressure piece	PU	Article
alpine white plastic	alpine white plastic	1	773 762
chrome matt plastic	chrome matt plastic	1	773 755
chrome-plated plastic	chrome-plated plastic	1	773 748

Visign for Public

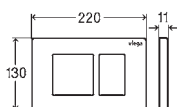
FUNCTIONAL AND DURABLE.

The Visign for Public flush plates are particularly well suited to use in public amenities. Their smooth surfaces make them easy to clean. Its durable material provides protection from vandalism. Flush actuation is manual or infrared. With the infrared system, a sensor behind the cover plate detects touchless use and automatically actuates a flush. The flush volume and sensing range can be adjusted individually.

VISIGN FOR PUBLIC 10



Article 774 349



WC flush plate for Prevista Visign for Public 10

- for all Prevista concealed cisterns
- manual flush actuation from front or top, dual flush technology, screwable

Equipment

fixing frame, actuating rod set, fixing bolt

Model 8630.1

Cover plate	Pressure piece	PU	Article
brushed stainless steel	brushed stainless steel	1	774 349

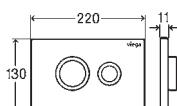
VISIGN FOR PUBLIC 11



Article 774 325



Article 774 332



WC flush plate for Prevista Visign for Public 11

- for all Prevista concealed cisterns
- manual flush actuation from front or top, dual flush technology, screwable

Equipment

fixing frame, actuating rod set, fixing bolt

Model 8631.1

Cover plate	Pressure piece	PU	Article
brushed stainless steel	polished stainless steel	1	774 325
stainless steel traffic white	polished stainless steel	1	774 332

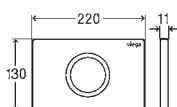
VISIGN FOR PUBLIC 12



Article 774 370



Article 774 387



WC flush plate for Prevista Visign for Public 12 infrared flush actuation

- for all Prevista concealed cisterns
- only in connection with accessory set model 8655.11
- touchless infrared flush actuation from front, dual flush technology, with Viega Hygiene function, screwable

Equipment

fixing frame, actuating rod set, fixing bolt

Technical data

Small flush volume factory setting approx. 3 l

Large flush volume factory setting approx. 6 l

Note

Electronic accessory set has to be ordered separately.

Model 8635.1

Cover plate	PU	Article
brushed stainless steel	1	774 370
stainless steel polished white	1	774 387

Viega Visign flush plates ACCESSORIES.



WC ACTUATION ACCESSORIES



Accessory set electronic

- equipped with drive unit model 8580.29
- use with WC flush plate for Prevista

Equipment

mains adapter (cable length 1.05 m)

Technical data

Netzspannung 100–240 V AC/50–60 Hz

Model 8655.11

	PU	Article
	1	783 952



WC installation frame for Prevista with LED lightning

- for all Prevista concealed cisterns
- only in connection with WC flush plate for Prevista Visign for More 201 and Visign for More 204
- plastic

Model 8650.1

	PU	Article
	1	775 803



WC installation frame for Prevista tile-level

- for Prevista concealed cistern, tile-level installation of the WC flush plate, dry construction

Model 8651.1

Version	PU	Article
chrome-plated	1	775 810

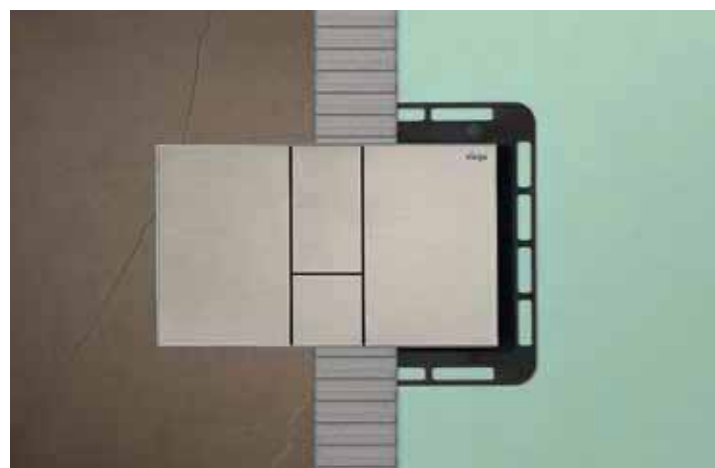


WC tablet holder for Prevista

- for WC cleaning tablets

Model 8653.1

	PU	Article
	1	773 366



Viega Visign urinal flush plates

THE PERFECT DESIGN ENHANCEMENT FOR YOUR RESTROOM.

Coordinated design is an important factor when it comes to configuring a restroom. That is why we supply Viega urinal flush plates that go perfectly with your WC flush. Which means that there are no limits to your design ideas. And that includes the colours: We can also provide individual paint or metal finishes for your flush plates on request.



VISIGN FOR STYLE 20



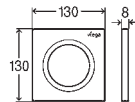
Article 774 493



Article 774 486



Article 774 479



**Urinal flush plate for Prevista
Visign for Style 20**

- for urinal flushing system
- plastic
- manual flush actuation from front

Equipment
fixing frame, actuating rod set, fixing bolt, cartridge valve
Model 8610.2

Cover plate	Pressure piece	PU	Article
alpine white plastic	alpine white plastic	1	774 493
chrome matt plastic	chrome matt plastic	1	774 486
chrome-plated plastic	chrome-plated plastic	1	774 479

VISIGN FOR STYLE 21



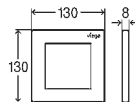
Article 774 523



Article 774 516



Article 774 509



**Urinal flush plate for Prevista
Visign for Style 21**

- for urinal flushing system
- plastic
- manual flush actuation from front

Equipment
fixing frame, actuating rod set, fixing bolt, cartridge valve
Model 8611.2

Cover plate	Pressure piece	PU	Article
alpine white plastic	alpine white plastic	1	774 523
chrome matt plastic	chrome matt plastic	1	774 516
chrome-plated plastic	chrome-plated plastic	1	774 509

VISIGN FOR STYLE 23



Article 774 554



Article 774 547



Article 774 530



Article 774 578



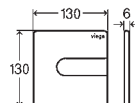
Article 774 561



Article 774 592



Article 774 585



**Urinal flush plate for Prevista
Visign for Style 23**

- for urinal flushing system
- plastic
- manual flush actuation from front

Equipment
fixing frame, actuating rod set, fixing bolt, cartridge valve
Model 8613.2

Cover plate	Pressure piece	PU	Article
alpine white plastic	alpine white plastic	1	774 554
chrome matt plastic	chrome matt plastic	1	774 547
chrome-plated plastic	chrome-plated plastic	1	774 530
plastic polished black	plastic polished black	1	774 578
plastic stainless steel coloured brushed	plastic stainless steel coloured brushed	1	774 561
acrylic polished black	plastic black matt	1	774 592
acrylic polished black	plastic stainless steel coloured brushed	1	774 585



DESIGN PLUS
powered by: **ISH**

VISIGN FOR MORE 200



Article 774 639



Article 774 622



Article 774 646



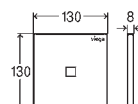
Article 774 677



Article 774 660



Article 774 653



**Urinal flush plate for Prevista
Visign for More 200
infrared flush actuation**

- for urinal flushing system
- plastic, glass, wood
- touchless infrared flush actuation from front

Equipment

fixing frame, actuating rod set, fixing bolt, electronic cartridge valve, mains adapter

Technical data

Mains voltage 100–240 V AC/50–60 Hz

Note

With Viega Hygiene function optionally after 1 h, 12 h, 24 h, 72 h or 168 h without use. With joint between wall and flush plate for visual separation of the components (shadow gap).

Model 8620.2

Cover plate	PU	Article
alpine white plastic	1	774 639
chrome-plated plastic	1	774 622
plastic stainless steel coloured brushed	1	774 646
glass black	1	774 677
glass white	1	774 660
wood stained oak	1	774 653



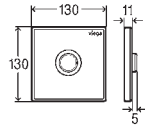
VISIGN FOR PUBLIC 11



Article 774 608



Article 774 615



Urinal flush plate for Prevista

Visign for Public 11

- for urinal flushing system
- stainless steel
- manual flush actuation from front

Equipment

fixing frame, actuating rod set, fixing bolt, cartridge valve

Model 8631.2

Cover plate	Pressure piece	PU	Article
brushed stainless steel	polished stainless steel	1	774 608
stainless steel polished white	stainless steel polished white	1	774 615

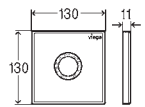
VISIGN FOR PUBLIC 12



Article 774 684



Article 774 691



Urinal flush plate for Prevista

Visign for Public 12

infrared flush actuation

- for urinal flushing system
- stainless steel
- touchless infrared flush actuation from front

Equipment

fixing frame, actuating rod set, fixing bolt, electronic cartridge valve, mains adapter

Technical data

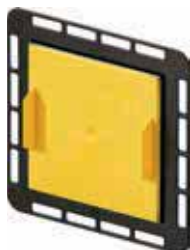
Mains voltage 230 V/50 Hz

Note

With Viega Hygiene function optionally after 1 h, 12 h, 24 h, 72 h or 168 h without use.

Model 8635.2

Cover plate	PU	Article
brushed stainless steel	1	774 684
stainless steel polished white	1	774 691



Urinal installation frame for Prevista

tile-level

- for tile-level installation of the urinal flush plate
- plastic

Model 8651.2

Version	PU	Article
chrome-plated	1	775 827

Viega Advantix Cleviva

DESIGN FREEDOM MADE EASY: ADVANTIX CLEVIVA.

The bathroom is a place of well-being. The demands of bathroom users are correspondingly high: they want individual styling, with plenty of scope for their own design ideas. The Advantix Cleviva shower channel featuring surface-guided single-point drainage offers just that: high-end bathroom styling and freedom of design. And the best of all: the new shower channels are quick and easy to install and adapt to every bathroom environment.

Find out more:
[viega.com/Cleviva](https://www.viega.com/Cleviva)



The range in overview.

Whatever the installation situation, the Viega Advantix Cleviva shower channel can fulfil virtually any customer wishes. The set is also available as a complete channel in 800 mm, 1,000 mm and 1,200 mm lengths and 95 mm height (model: 4981.10) or as a refurbishment variant (model: 4981.11).



Model: 4981.80
Standard drain unit
Construction height:
95–155 mm
Water seal level: 50 mm
Drainage capacity: 0,5–0,75 l/s*

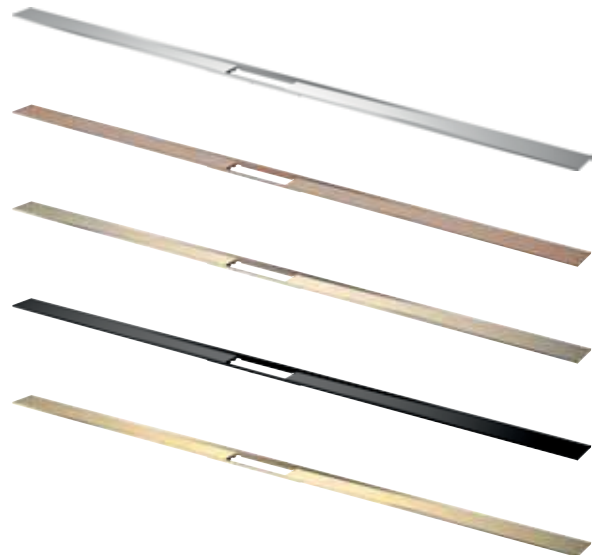


Model: 4981.81
Refurbishment drain unit
Construction height: from 70 mm
Water seal level: 25 mm
Drainage capacity: 0,4–0,7 l/s*

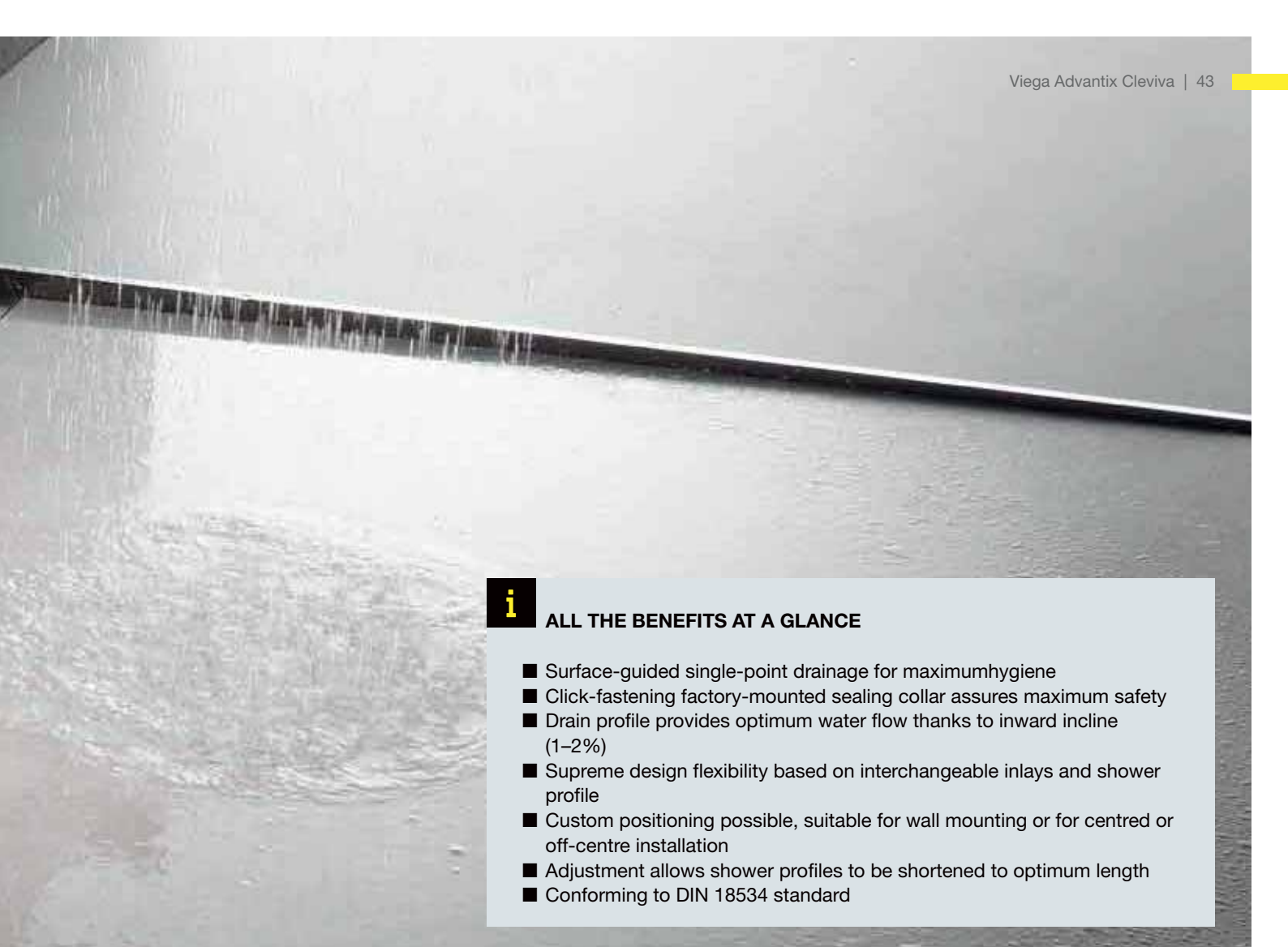


Model 4981.90
Vertical drain unit
Water seal level from 25 mm
without odour trap
Drainage capacity: 0,5–0,6 l/s

Model: 4981.30, 4981.31, 4981.32
Profile lengths: 800, 1.000, 1.200 mm
Material: stainless steel 1.4301



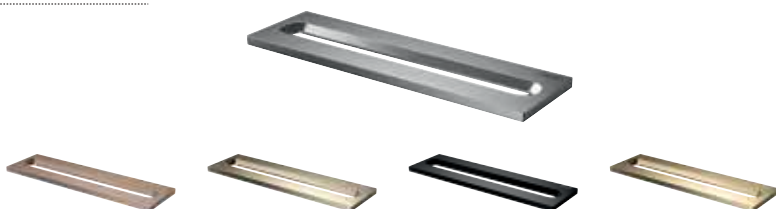
*Criteria: water accumulation height, design inlay and dirt trap



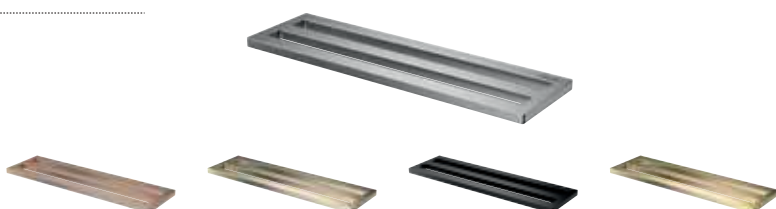
i ALL THE BENEFITS AT A GLANCE

- Surface-guided single-point drainage for maximum hygiene
- Click-fastening factory-mounted sealing collar assures maximum safety
- Drain profile provides optimum water flow thanks to inward incline (1–2%)
- Supreme design flexibility based on interchangeable inlays and shower profile
- Custom positioning possible, suitable for wall mounting or for centred or off-centre installation
- Adjustment allows shower profiles to be shortened to optimum length
- Conforming to DIN 18534 standard

Model: 4981.50
Inlay Visign C1



Model: 4981.60
Inlay Visign C2



Model: 4923.5
Pipe isolation



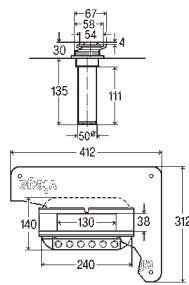
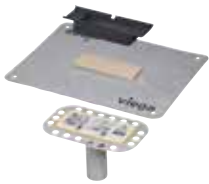
Model: 4914.90
Sound insulating element



Model: 4965.90
Tool



INSTALLATION HEIGHT FROM 25 MM



Advantix Cleviva shower channel drain vertical

- for bonded sealing (tiled shower)
- without: odour trap

Equipment

mounting flange, pre-assembled sealing collar, height adjustment piece, sieve insert

Technical data

Drainage capacity accumulation height 10 mm 0.5 l/s
 Drainage capacity accumulation height 20 mm 0.6 l/s

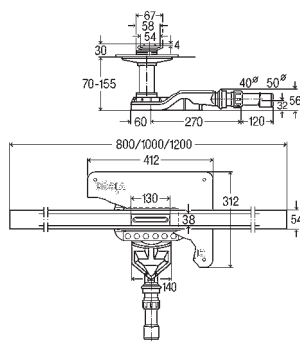
Note

The indicated drainage capacity will be reached with sieve insert.

Model 4981.90

DN	PU	Article
50	1	797 270

INSTALLATION HEIGHT FROM 70 MM



Advantix Cleviva shower channel with Advantix inlay Visign C1 (reconstruction model)

- for bonded sealing (tiled shower)
- not suitable for Advantix pipe lead-in fire protection R120 model 4923.5
- stainless steel 1.4301

Equipment

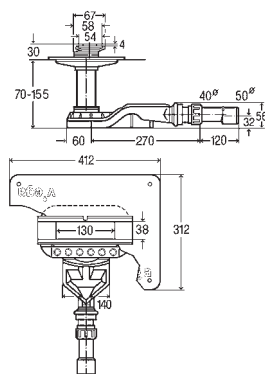
shower channel profile, inlay, odour trap, mounting flange, pre-assembled sealing collar, height adjustment piece, drain pipe, sieve insert, fixing set

Technical data

Water seal level 25 mm
 Drainage capacity accumulation height 10 mm 0.4–0.5 l/s
 Drainage capacity accumulation height 20 mm 0.45–0.55 l/s

Model 4981.11

L	CH	DN	Version	PU	Article
800	70	40/50	brushed	1	794 491
1.000	70	40/50	brushed	1	794 507
1.200	70	40/50	brushed	1	794 514



Advantix Cleviva shower channel base unit (reconstruction model)

- for bonded sealing (tiled shower)
- not suitable for Advantix pipe lead-in fire protection R120 model 4923.5

Equipment

odour trap, mounting flange, pre-assembled sealing collar, height adjustment piece, drain pipe, sieve insert

Technical data

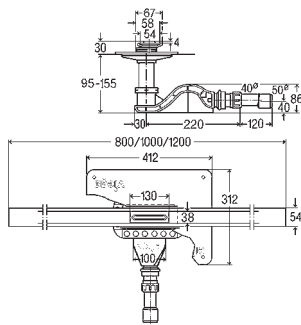
Water seal level 25 mm
 Drainage capacity accumulation height 10 mm 0.4–0.5 l/s
 Drainage capacity accumulation height 20 mm 0.45–0.55 l/s

Model 4981.81

CH	DN	PU	Article
70	40/50	1	794 415 ¹

1) installation height up to 155 mm possible

INSTALLATION HEIGHT FROM 95 MM



Advantix Cleviva shower channel with Advantix inlay Visign C1

- for bonded sealing (tiled shower)
- stainless steel 1.4301

Equipment

shower channel profile, inlay, odour trap, mounting flange, pre-assembled sealing collar, height adjustment piece, drain pipe, sieve insert, fixing set

Technical data

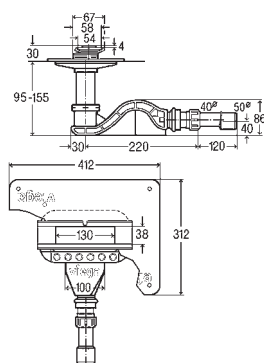
Water seal level 50 mm

Drainage capacity accumulation height 10 mm 0.5–0.65 l/s

Drainage capacity accumulation height 20 mm 0.55–0.7 l/s

Model 4981.10

L	CH	DN	Version	PU	Article
800	95-155	40/50	brushed	1	794 460
1.000	95-155	40/50	brushed	1	794 477
1.200	95-155	40/50	brushed	1	794 484



Advantix Cleviva shower channel base unit

- for bonded sealing (tiled shower)

Equipment

odour trap, mounting flange, pre-assembled sealing collar, height adjustment piece, drain pipe, sieve insert

Technical data

Water seal level 50 mm

Drainage capacity accumulation height 10 mm 0.5–0.65 l/s

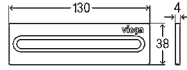
Drainage capacity accumulation height 20 mm 0.55–0.7 l/s

Model 4981.80

BH	DN	PU	Article
95-155	40/50	1	794 408



ADVANTIX CLEVIVA SHOWER CHANNELS ACCESSORIES



Advantix Cleviva shower channel inlay Visign C1

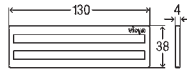
single inlet opening

- suitable for Advantix Cleviva shower channel base unit model 4981.80, 4981.81, Advantix Cleviva shower channel drain vertical model 4981.90
- stainless steel 1.4301

Model 4981.50

Version	PU	Article
brushed stainless steel	1	794 095
stainless steel copper/gold-coloured brushed	1	794 040¹
stainless steel champagne brushed	1	794 156¹
stainless steel black brushed	1	794 002¹
stainless steel gold-coloured brushed	1	794 026¹

¹⁾ PVD-coated



Advantix Cleviva shower channel inlay Visign C2

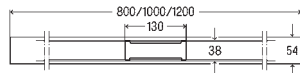
double inlet opening

- suitable for Advantix Cleviva shower channel base unit model 4981.80, 4981.81, Advantix Cleviva shower channel drain vertical model 4981.90
- stainless steel 1.4301

Model 4981.60

Version	PU	Article
brushed stainless steel	1	794 101
stainless steel copper/gold-coloured brushed	1	794 200¹
stainless steel champagne brushed	1	794 217¹
stainless steel black brushed	1	794 163¹
stainless steel gold-coloured brushed	1	794 187¹

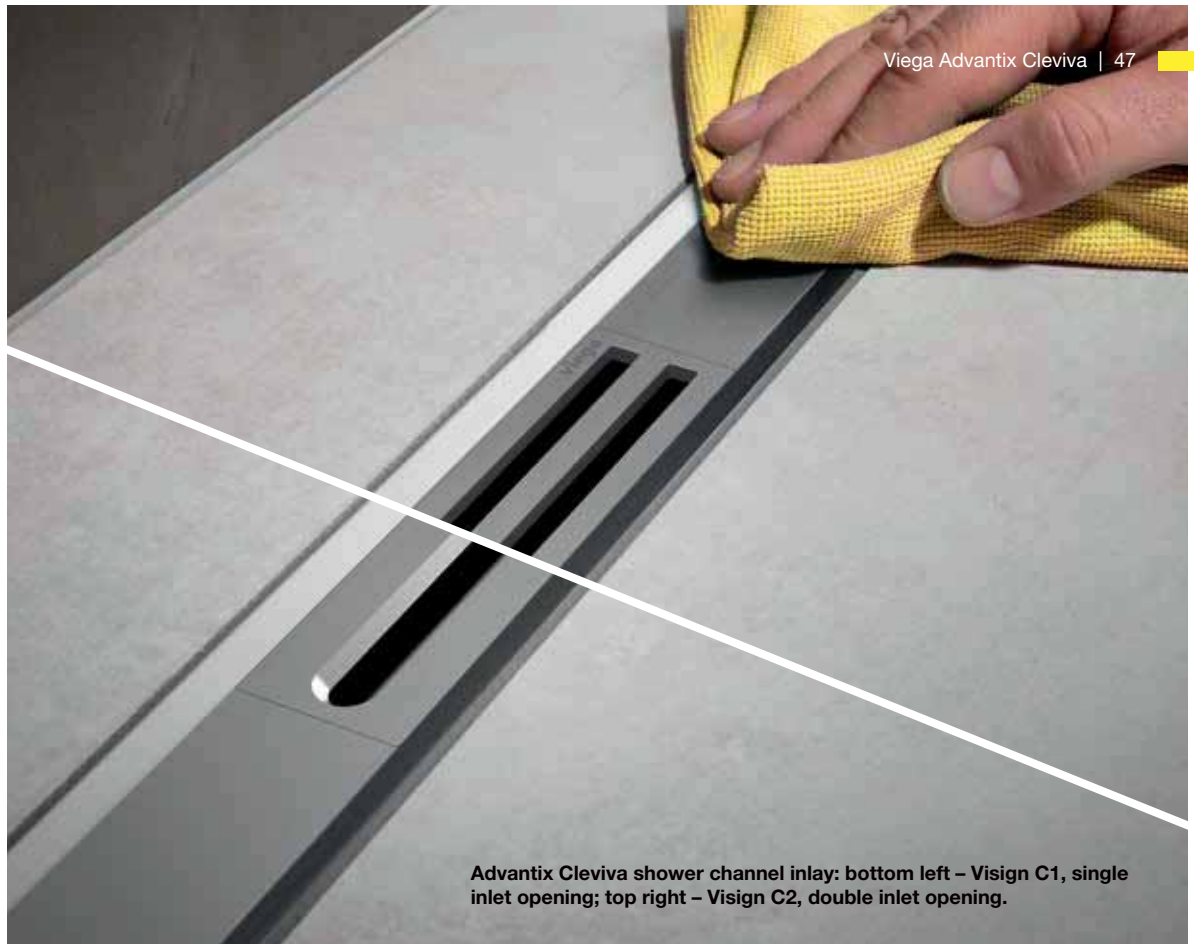
¹⁾ PVD-coated



Advantix Cleviva shower channel profile

- suitable for Advantix Cleviva shower channel base unit model 4981.80, 4981.81, Advantix Cleviva shower channel drain vertical model 4981.90
- stainless steel 1.4301

Model	L	Version	PU	Article
4981.30	800	brushed stainless steel	1	794 118
		stainless steel copper/gold-coloured brushed	1	794 262
		stainless steel champagne brushed	1	794 279
		stainless steel black brushed	1	794 224
		stainless steel gold-coloured brushed	1	794 248
4981.31	1.000	brushed stainless steel	1	794 125
		stainless steel copper/gold-coloured brushed	1	794 323
		stainless steel champagne brushed	1	794 330
		stainless steel black brushed	1	794 286
4981.32	1.200	stainless steel gold-coloured brushed	1	794 309
		brushed stainless steel	1	794 132
		stainless steel copper/gold-coloured brushed	1	794 385
		stainless steel champagne brushed	1	794 392
		stainless steel black brushed	1	794 347
		stainless steel gold-coloured brushed	1	794 361



Advantix Cleviva shower channel inlay: bottom left – Visign C1, single inlet opening; top right – Visign C2, double inlet opening.



For perfect hygiene and style

Install a beautiful design element whose internal slope and single-point drain not only ensure smooth, unimpeded drainage for optimum water flow but also make cleaning particularly easy. The Viega shower channel is designed in such a way that the open drain profile no longer creates any space for dirt deposits and that grate removal is no longer necessary. The drain profile can be cleaned with a cloth in no time.

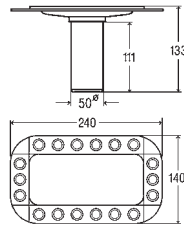
Flexibility comes as standard

A shower channel that will accommodate any design idea while offering the highest standardised quality in terms of material, hygiene and flexibility. The Advantix Cleviva can be extended to any length. The profile has a flat end surface on both ends. This allows for several complete models to be arranged in line.

Custom lengths are possible by shortening the flat profile ends by a maximum of 10 cm. Alongside the standard drain for construction heights from 95 mm, a flat drain is also available for renovation projects with installation heights from 70 mm.

Great shape

Viega Advantix Cleviva's great flexibility in terms of use and assembly is only matched by the quality of its material. The stainless steel 1.4301 used is 4 mm thick, torsion-free and bend-resistant and therefore cannot be deformed.



Advantix Cleviva mounting flange

- suitable for Advantix Cleviva shower channel model 4981.10, 4981.11, Advantix Cleviva shower channel base unit model 4981.80, 4981.81, Advantix Cleviva shower channel drain vertical model 4981.90

Model 4981.83

	PU	Article
	1	794 439



Advantix Cleviva shower channel fixing set

- holding clamps, fixing screws, plastic dowels

Model 4981.89

	PU	Article
	1	797 003



Advantix sound protection element

- for Advantix bath and floor drains
- ageing resistant and permanently elastic, dynamic stiffness $\leq 30 \text{ MN/m}^3$

Model 4914.90

L	W	H	PU	Article
500	350	3	1	790 448
500	350	8	1	791 650



Drain elbow 45°

- for connection to the waste water system
- non-adhesive

Model 6162.99

DN	PU	Article
40/50	1	719 265



Advantix tool

- for removal of all Advantix grates

Model 4965.90

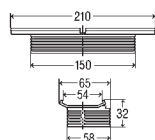
	PU	Article
	1	689 704



Deburrer

Model 2043

	PU	Article
	1	151 874

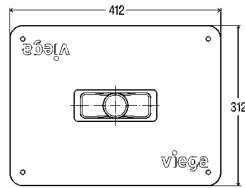


Advantix Cleviva height adjustment piece

- suitable for Advantix Cleviva shower channel model 4981.10, 4981.11, Advantix Cleviva shower channel base unit model 4981.80, 4981.81, Advantix Cleviva shower channel drain vertical model 4981.90

Model 4981.84

	PU	Article
	1	794 446



Advantix Cleviva sealing collar

- suitable for Advantix Cleviva shower channel model 4981.10, 4981.11, Advantix Cleviva shower channel base unit model 4981.80, 4981.81, Advantix Cleviva shower channel drain vertical model 4981.90

Model 4981.82

	PU	Article
	1	794 422



Advantix Cleviva sieve insert

- suitable for Advantix Cleviva shower channel model 4981.10, 4981.11, Advantix Cleviva shower channel base unit model 4981.80, 4981.81, Advantix Cleviva shower channel drain vertical model 4981.90

Model 4981.85

	PU	Article
	1	794 453



Drain pipe

- for connection to the waste water system
- non-adhesive

Model 4981.86

DN	PU	Article
40/50	1	794 521









Our online shower channel configurator is an easy way to help you make the decision that is right for you

advantix.viega.com

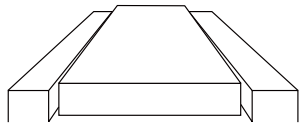
Viega Advantix shower channel

FEWER COMPONENTS, MORE FLEXIBILITY FOR PLANNING.

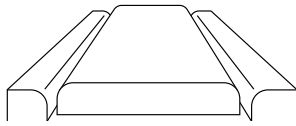
Reduction is the magic word. This is not only true for the clear design actually fitting perfectly in each bathroom but also for the reduced constituents of the modular system. This makes planning particularly easy. Each one of the two channel models – for free installation or wall installation – can be combined with all drains, mounting feet, mounting frames and design grates. It is certainly also possible to replace the grates later. It goes without saying that by each combination you are opting for convincing design, best quality and a system built to perform.

Base unit	Drains	Mounting feet
 <p>Base unit for free-standing installation in five lengths from 750–1,200 mm Model 4982.10</p>	 <p>for construction heights from 95 mm, drainage capacity: 0.5 – 0.55 l/s*, water seal level: 50 mm (can be shortened to reconstruction model) Model 4982.92</p>	 <p>(with rubberised adjustable feet) Model 4982.90</p>
 <p>Base unit for wall installation in five lengths from 750–1,200 mm Model 4982.20</p>	 <p>Reconstruction model for construction heights from 70 mm, drainage capacity: 0.4 – 0.45 l/s*, water seal level: 25 mm Model 4982.93</p>	 <p>Reconstruction model (with rubberised adjustable feet) Model 4982.91</p>
	 <p>vertical model for construction heights from 40 mm, drainage capacity: 0.9 – 1.1 l/s*, water seal level: 50 mm (fire protection pipe lead-in possible) Model 4982.94</p>	
	 <p>vertical model without odour trap Drainage capacity accumulation height 10 mm 1.2 l/s Drainage capacity accumulation height 20 mm 1.2 l/s Model 4982.83</p>	

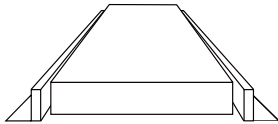
* Measured at the water level height of 10–20 mm above the tile.



The slimmed-down frames and grates come in squared ...



... and rounded variants ...



... as well as standard frames.



YOUR ADVANTAGES FOR PLANNING

- Small drain with favourable flow conditions ensures good flushing and fewer cleaning intervals
- Easy cleaning of drain and profile also possible with the cleaning spiral
- Available in five lengths: 750, 800, 900, 1,000 and 1,200 mm
- Top quality material selection and workmanship
- Recent reduced design (40 mm), square or rounded in matt or high-gloss polished design, as a tile plate, tile trough, or glass version
- Frame in square contour, rounded contour or standard designs
- Satisfies the soundproofing requirements as per DIN 4109 and/or VDI 4100
- Viega Advantix pipe lead-in R 120 (accessories) as an optimal fire protection solution for floor lead-ins

Mounting frame



Square contour
Model 4982.30



Rounded contour
Model 4982.40



Standard version
of construction height 12 mm
Model 4982.45

Design grates



Visign ER10 square contour
(matt or high-gloss polished)
Model 4982.51



Visign ER11 rounded contour
(matt or high-gloss polished)
Model 4982.61



Visign ER12, tileable, rimless
Model 4982.71



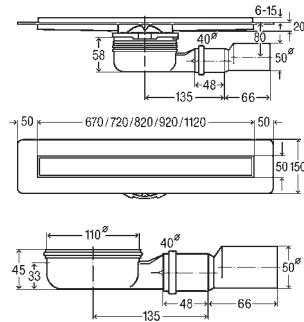
Visign ER13, tileable, with all-round rim
Model 4982.70



Visign ER14 glass version
(black or grey)
Model 4982.81



ADVANTIX SHOWER CHANNEL INSTALLATION HEIGHT FROM 95 MM, COMPLETE MODELS



Advantix shower channel with Advantix grate Visign ER10

- for bonded sealing (tiled shower) or sealing lane
- stainless steel 1.4301

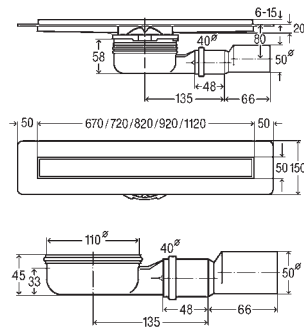
Equipment

sand-coated sealing flange, polished grate, adjusting feet set, removable odour trap, cleaning possibility for connection line, rotatable drain DN40, adapter to DN50, sieve insert

Technical data

Load class K=300 kg
 Water seal level 50 mm
 Drainage capacity accumulation height 10 mm 0.5 l/s
 Drainage capacity accumulation height 20 mm 0.55 l/s
Model 4983.10

L	PU	Article
750	1/19	753 153
800	1/19	753 160
900	1/19	753 177
1000	1/19	753 184
1200	1/19	753 191



Advantix shower channel with Advantix grate Visign ER13

- or bonded sealing (tiled shower) or sealing lane
- stainless steel 1.4301

Equipment

sand-coated sealing flange, grate tileable, adjusting feet set, removable odour trap, cleaning possibility for connection line, rotatable drain DN40, adapter to DN50, sieve insert

Technical data

Load class K=300 kg
 Water seal level 50 mm
 Drainage capacity accumulation height 10 mm 0.5 l/s
 Drainage capacity accumulation height 20 mm 0.55 l/s
Model 4983.20

L	PU	Article
750	1/19	753 207
800	1/19	753 214
900	1/19	753 221
1000	1/19	753 238
1200	1/19	753 245

viega

**Advantix shower channel mounting frame**

- for all Advantix shower channel grates, flooring height of 12–15 mm (tile + adhesive)
- brushed
- stainless steel 1.4301

Model 4982.45

L	PU	Article
750	1	745 356
800	1	745 363
900	1	745 370
1000	1	745 387
1200	1	745 394

**Advantix extension set**

- for Advantix shower channel grate, extension (15–25 mm) when using natural stone covering

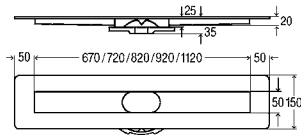
Model 4971.70

QS	PU	Article
8	1	593 933

QS = Quantity per set

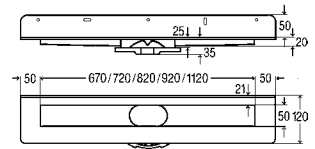
ADVANTIX COMBINATION OVERVIEW

Advantix shower channel base unit
for bonded sealing (tiled shower) or sealing lane



Model 4982.10

L	PU	Article
750	1	736 965
800	1	736 972
900	1	736 989
1000	1	736 996
1200	1	737 009



Model 4982.20 Wall

L	PU	Article
750	1	737 016
800	1	737 023
900	1	737 030
1000	1	737 047
1200	1	737 054



ADVANTIX SHOWER CHANNEL WITH ODOUR TRAP



Installation height from 95 mm
can be shortened after installation as reconstruction
model
Model 4982.92

PU	Article
1	737 573



Installation height from 70 mm
reconstruction model
Model 4982.93

PU	Article
1	737 580



Installation height from 40 mm
vertical drain
Model 4982.94

DN	PU	Article
50	1	737 597

ADVANTIX SHOWER CHANNEL WITHOUT ODOUR TRAP



vertical drain
without: odour trap
Model 4982.83

DN	PU	Article
40	1	766 955



MOUNTING FEET



Installation height 95 – 160 mm
Model 4982.90

CH	QS	PU	Article
70-95	2	1	737 559

QS = Quantity per set

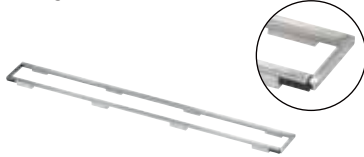


Installation height 70 – 95 mm
reconstruction model
Model 4982.91

CH	QS	PU	Article
70-95	2	1	737 566

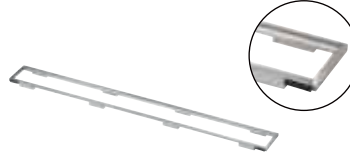
QS = Quantity per set

MOUNTING FRAME



angular contour, brushed
for flooring height of 8–20 mm
Model 4982.30

L	PU	Article
750	1	736 804
800	1	736 811
900	1	736 828
1000	1	736 835
1200	1	736 842



round contour, brushed
for flooring height of 8–20 mm
Model 4982.40

L	PU	Article
750	1	737 061
800	1	737 078
900	1	737 085
1000	1	737 092
1200	1	737 108



standard, brushed
for flooring height of 12–15 mm
Model 4982.45

L	PU	Article
750	1	745 356
800	1	745 363
900	1	745 370
1000	1	745 387
1200	1	745 394

GRATE



Grate Visign ER10
angular contour
for flooring height of 6–15 mm
Model 4982.50 brushed

L	PU	Article
750	1	737 153
800	1	737 160
900	1	737 177
1000	1	737 184
1200	1	737 191

Model 4982.51 polished

750	1	737 207
800	1	737 214
900	1	737 221
1000	1	737 238
1200	1	737 245



Grate Visign ER11
round contour
for flooring height of 6–15 mm
Model 4982.60 brushed

L	PU	Article
750	1	737 252
800	1	737 269
900	1	737 276
1000	1	737 283
1200	1	737 290

Model 4982.61 polished

750	1	737 306
800	1	737 313
900	1	737 320
1000	1	737 337
1200	1	737 344



Grate Visign ER14
glas
for flooring height of 6–18 mm
Model 4982.81 clear/light grey glass

L	PU	Article
750	1	737 504
800	1	737 511
900	1	737 528
1000	1	737 535
1200	1	737 542

Model 4982.80 clear/black glass

750	1	737 450
800	1	737 467
900	1	737 474
1000	1	737 481
1200	1	737 498



Grate Visign ER12
for insertion of a surface of tile or natural stone
of any height
Model 4982.71

L	PU	Article
750	1	737 405
800	1	737 412
900	1	737 429
1000	1	737 436
1200	1	737 443



Grate Visign ER13
for insertion of a surface of tile or natural stone
of any height
(10 mm)
Model 4982.70

L	PU	Article
750	1	737 351
800	1	737 368
900	1	737 375
1000	1	737 382
1200	1	737 399



Article 745 400: Advantix shower channel accessory set 23–36 mm. suitable for Advantix shower channel mounting frame Article 736 804 und 737 061.

Article 593 933: Advantix extension set 15–25 mm for Advantix shower channel grate, extension (15–25 mm) when using natural stone covering

Viega Advantix Vario

INDIVIDUALITY AT ITS MOST BEAUTIFUL.

Planning with the largest possible flexibility: Vario can both be installed in the wall and on the wall or freely in the room – optionally in straight shape, L or U shape, adapted to the architecture and the required drainage capacity.

Find out more:
viega.com/Advantix-Vario

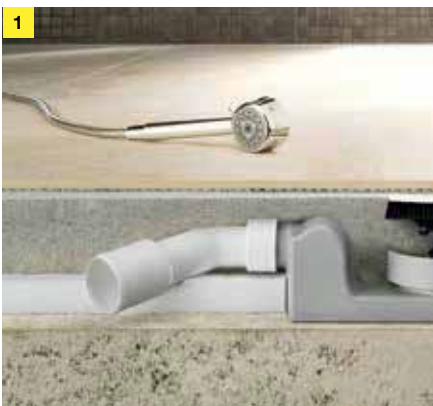
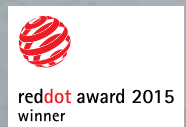
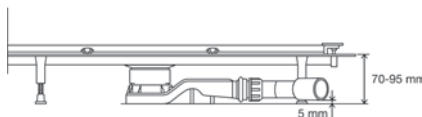
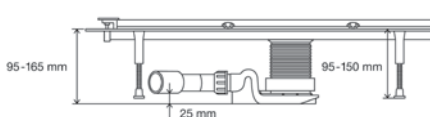


Fig. 1: Variable also in height: Construction height between 95 and 165 mm.



Fig. 2: Extremely flat: The special refurbishment drain reduces the construction height to 70 mm.



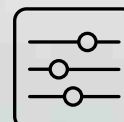
i

ALL THE BENEFITS AT A GLANCE

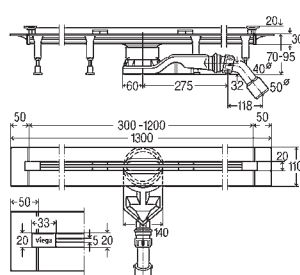
- Individual lengths from 300 to 2,800 mm (can be sawn by hand)
- Installation possible in straight line, or L or U shape
- Minimum construction height 95 mm with a drainage capacity of 0.4 l/s
- Maximum construction height 165 mm with a drainage capacity of 0.8 l/s
- Siphonic with efficient self-cleaning features
- Bonded sealing with liquid foil
- Easy to clean thanks to smooth-walled base unit without dead spaces



Our online shower channel configurator is an easy way to help you make the decision that is right for you



advantix.viega.com

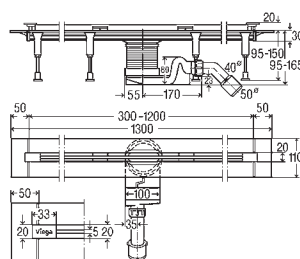


Advantix Vario shower channel base unit continuously cut to length 70 mm (reconstruction model)

- for bonded sealing (tiled shower) or sealing lane
- high-quality plastic

Model 4966.10

L	CH	DN	PU	Article
300-1200	70-95	40/50	1	721 671



Advantix Vario shower channel base unit continuously cut to length

- for bonded sealing (tiled shower) or sealing lane
- high-quality plastic

Model 4965.10

L	CH	DN	PU	Article
300-1200	95-150	40/50	1	686 277



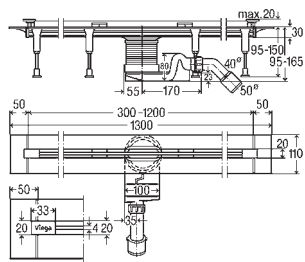
Advantix Vario shower channel standing grate

- suitable for Advantix Vario shower channel base unit model 4965.10, 4966.10
- stainless steel 1.4301

Model	Visign	L	Version	PU	Article
4965.30	SR1	300-1200	brushed	1	686 284
4965.31	SR2	300-1200	polished	1	686 291
4965.32	SR3	300-1200	black	1	711 870
4965.33	SR4	300-1200	white	1	711 887



ADVANTIX VARIO – COMPLETE SETS



Advantix Vario shower channel continuously cut to length

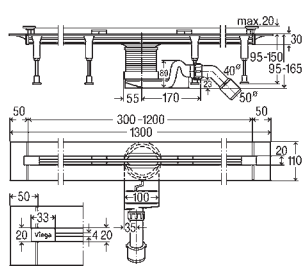
- for bonded sealing (tiled shower) or sealing lane
- equipped with Advantix Vario shower channel standing grate model 4965.30
- high-quality plastic

Equipment

adjusting feet set, closing caps, self-cleaning drain set, height-adjustable standing grate holder, height adjustment piece, sealing flange, sealing accessories, saw guide

Model 4965.20

L	CH	DN	Version	PU	Article
300-1200	95-150	40/50	brushed	1	704 353



**Advantix Vario shower channel
continuously cut to length**

- for bonded sealing (tiled shower) or sealing lane
- equipped with Advantix Vario shower channel standing grate model 4965.31
- high-quality plastic

Equipment

adjusting feet set, closing caps, self-cleaning drain set, height-adjustable standing grate holder, height adjustment piece, sealing flange, sealing accessories, saw guide

Model 4965.21

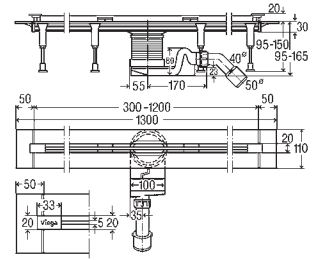
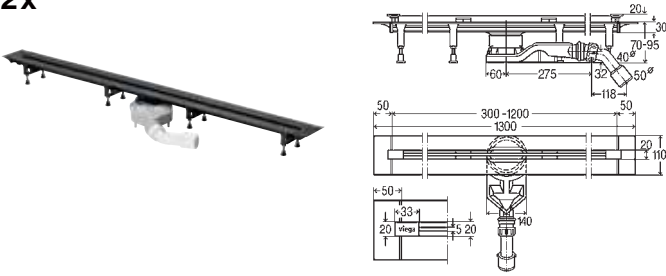
L	CH	DN	Version	PU	Article
300-1200	95-150	40/50	polished	1	704 360

Viega Advantix Vario

INDIVIDUAL LENGTHS.

FOR A CONSTRUCTION LENGTH BETWEEN 800 AND 2,400 MM, THE FOLLOWING ITEMS ARE REQUIRED:
 (Connecting two channels in a straight line increases the drainage capacity from 0.8 to 1.6 l/s)

2x



Advantix Vario shower channel base unit continuously cut to length 70 mm (reconstruction model)

- for bonded sealing (tiled shower) or sealing lane
- high-quality plastic

Model	L	CH	DN	PU	Article
4966.10	300-1200	70-95	40/50	1	721 671

Advantix Vario shower channel base unit continuously cut to length

- for bonded sealing (tiled shower) or sealing lane
- high-quality plastic

Model	L	CH	DN	PU	Article
4965.10	300-1200	95-150	40/50	1	686 277

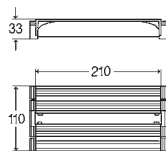
2x



Advantix Vario shower channel standing grate

- suitable for Advantix Vario shower channel base unit model 4965.10, 4966.10
- stainless steel 1.4301

Model	Visign	L	Version	PU	Article
4965.30	SR1	300-1200	brushed	1	686 284
4965.31	SR2	300-1200	polished	1	686 291
4965.32	SR3	300-1200	black	1	711 870
4965.33	SR4	300-1200	white	1	711 887



Advantix Vario connection piece

- for connection of two shower channels
- suitable for Advantix Vario shower channel base unit model 4965.10, Advantix Vario shower channel model 4965.20, 4965.21, Advantix Vario shower channel base unit model 4966.10
- high-quality plastic

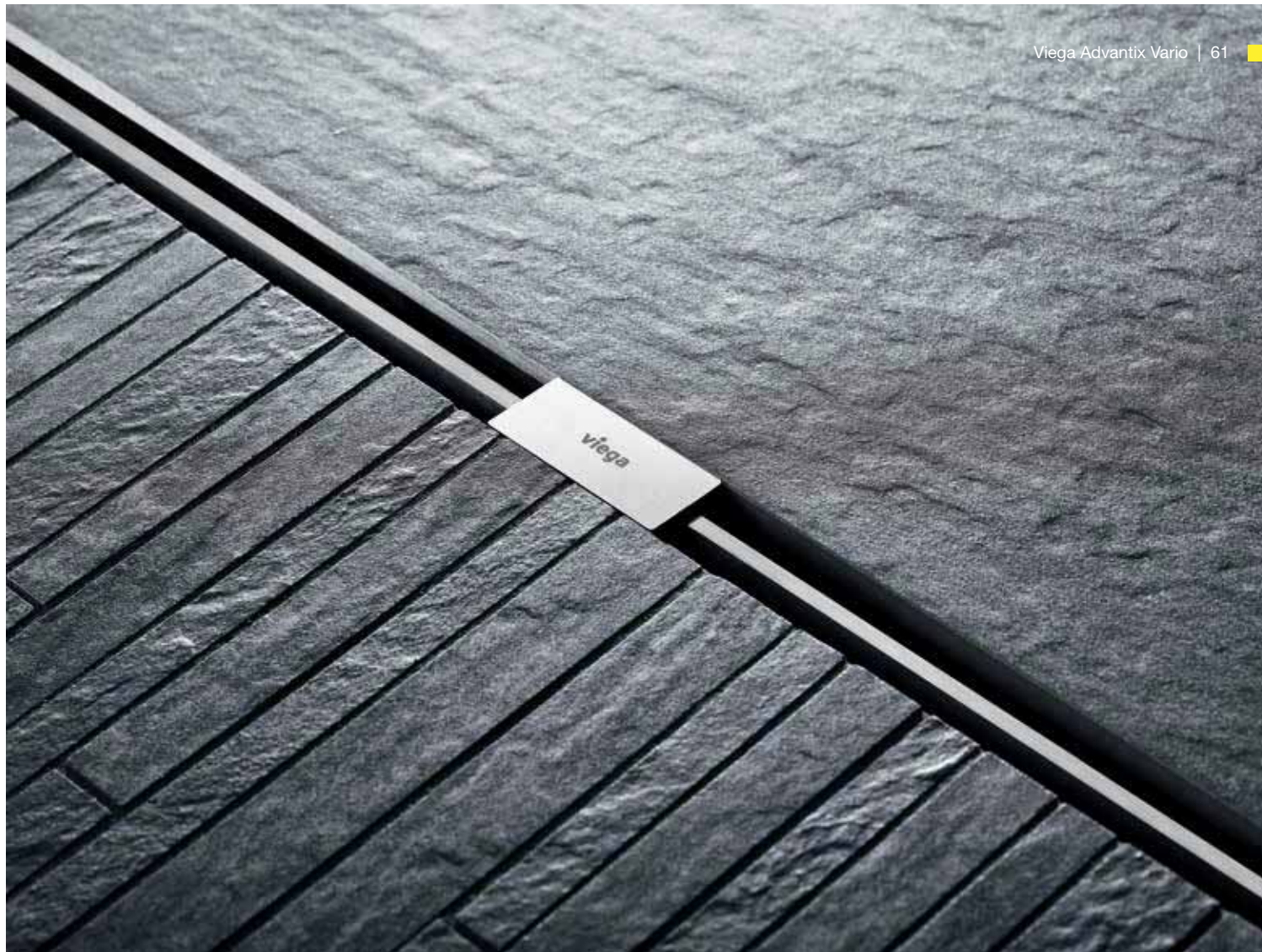
Model 4965.12

L	W	PU	Article
210	110	1	708 917



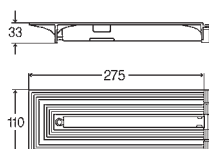
Advantix Vario accessory set Model 4965.50

Version	PU	Article
brushed	1	711 795
polished	1	711 801
black	1	711 818
white	1	711 825



FOR A CONSTRUCTION LENGTH BETWEEN 2,400 AND 2,800 MM,
THE FOLLOWING ADDITIONAL ITEMS ARE REQUIRED:

1-2x



Advantix Vario end closing piece

- for extension
- suitable for Advantix Vario shower channel base unit model 4965.10, Advantix Vario shower channel model 4965.20, 4965.21
- high-quality plastic

Model 4965.16

L	W	PU	Article
275	110	1	708 931



1-2x

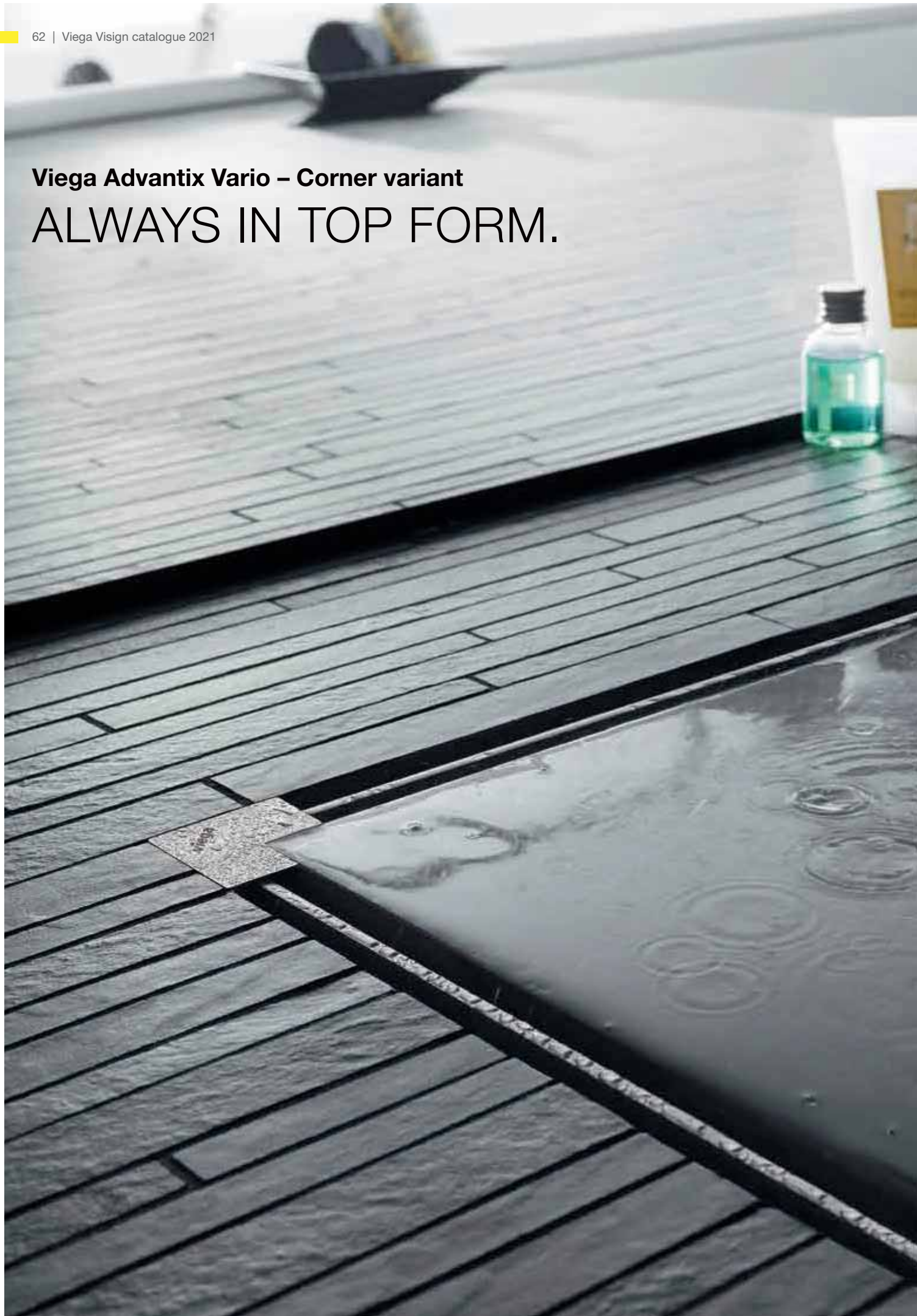


Advantix Vario shower channel standing grate set

- suitable for Advantix Vario connection piece 90° model 4965.14, Advantix Vario end closing piece model 4965.16, Advantix Vario connection piece 90° model 4966.14, Advantix Vario end closing piece model 4966.16
- stainless steel 1.4301

Model	Visign	L	Version	PU	Article
4965.60	SR1	200	brushed	1	711 832
4965.61	SR2	200	polished	1	711 849
4965.62	SR3	200	black	1	711 856
4965.63	SR4	200	white	1	711 863

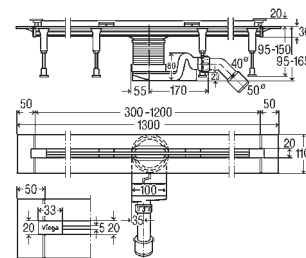
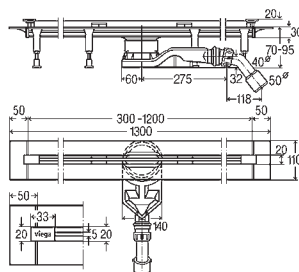
Viega Advantix Vario – Corner variant
ALWAYS IN TOP FORM.



CORNER INSTALLATIONS WITH LEG LENGTHS BETWEEN 500 MM AND 1,200 MM

FOR INSTALLING A CORNER VARIANT WITH LEGS OF MAX. 1,200 LENGTH, THE FOLLOWING ITEMS ARE REQUIRED:

2 x



Advantix Vario shower channel base unit continuously cut to length 70 mm (reconstruction model)

- for bonded sealing (tiled shower) or sealing lane
- high-quality plastic

Model	L	CH	DN	PU	Article
4966.10	300-1200	70-95	40/50	1	721 671

Advantix Vario shower channel base unit continuously cut to length 70 mm

- for bonded sealing (tiled shower) or sealing lane
- high-quality plastic

Model	L	CH	DN	PU	Article
4965.10	300-1200	95-150	40/50	1	686 277



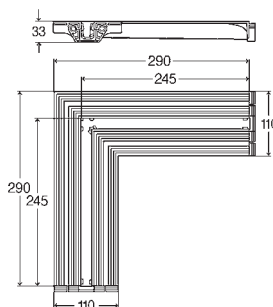
2 x



Advantix Vario shower channel standing grate

- suitable for Advantix Vario shower channel base unit model 4965.10, 4966.10
- stainless steel 1.4301

Model	Visign	L	Version	PU	Article
4965.30	SR1	300-1200	brushed	1	686 284
4965.31	SR2	300-1200	polished	1	686 291
4965.32	SR3	300-1200	black	1	711 870
4965.33	SR4	300-1200	white	1	711 887



Advantix Vario connection piece 90°

- for connection of two shower channels
- suitable for Advantix Vario shower channel base unit model 4965.10, Advantix Vario shower channel model 4965.20, 4965.21
- high-quality plastic

Model	L1	L2	W	PU	Article
4965.14	290	290	110	1	708 924
4966.14	290	290	110	1	721 688



Advantix Vario accessory set

- suitable for Advantix Vario connection piece 90° model 4965.14, 4966.14

Model 4965.51

Version	PU	Article
brushed	1	711 788
polished	1	711 757
black	1	711 771
white	1	711 764

If required, the length of the two shower channels can be extended to max. 200 mm.

For this, you'll need again the Advantix Vario end connection piece and the Advantix Vario standing grate set (see p. 61).

Viega Advantix Vario wall drain

CAN BE SHORTENED ACCURATELY TO THE MILLIMETRE – FOR LIMITLESS FLEXIBILITY.

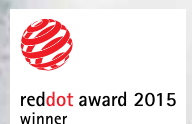
The Viega Advantix wall drain offers different variants for any possible installation situation. The height of the elements can also be easily adjusted to the situation on site. Thus, the Advantix Vario models offer maximum installation flexibility and maximum design individuality.

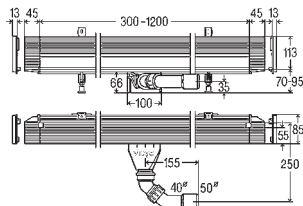


i

ALL THE BENEFITS AT A GLANCE

- The small wall installation depth of 25 mm into the wall cover allows for highly flexible installation also in small bathrooms
- Uniform laying of the floor covering up to the wall without gradients
- Easy to clean thanks to smooth-walled base unit without dead spaces
- Slimline design with standing grate and cover plates in four colours

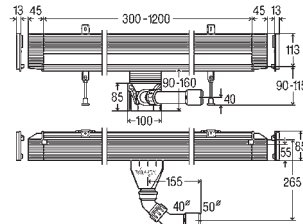




Advantix Vario shower channel base unit wall
continuously cut to length 70 mm (reconstruction model)

- for bonded sealing (tiled shower) or sealing lane
- high-quality plastic

Model	L	BH	DN	PU	Article
4968.10	300-1200	70-100	40/50	1	736 736



Advantix Vario shower channel base unit wall
continuously cut to length

- for bonded sealing (tiled shower) or sealing lane
- high-quality plastic

Model	L	BH	DN	PU	Article
4967.10	300-1200	90-160	40/50	1	736 552



Advantix Vario shower channel standing grate wall

- suitable for Advantix Vario shower channel base unit wall model 4967.10, 4968.10
- stainless steel 1.4301

Model	Visign	L	Version	PU	Article
4967.30	SR1	300-1200	brushed	1	736 569
4967.31	SR2	300-1200	polished	1	736 576
4967.32	SR3	300-1200	black	1	736 583
4967.33	SR4	300-1200	white	1	736 590



Advantix Vario shower channel accessory set wall

- suitable for Advantix Vario shower channel standing grate wall model 4967.30, 4967.31, 4967.32, 4967.33

Model 4967.86

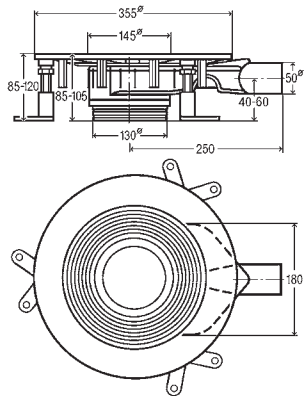
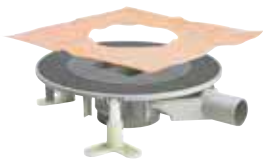
Version	PU	Article
brushed	1	736 606
polished	1	736 613
black	1	736 620
white	1	736 637

Viega Advantix bathroom drains

TURN SHOWERING INTO AN EXPERIENCE.

Advantix bathroom drains are suitable for the flowthrough of small to medium water volumes, e.g. in private apartments. Advantix floor drains, on the other hand, are suitable for handling large flowthrough volumes, e.g. in hospitals, sport halls and swimming pool showering areas.

ADVANTIX BASE UNIT



Advantix Top bath/floor drain base unit

- for bonded sealing (tiled shower) with sealing mat
- not suitable for Advantix stacking element model 4994
- system dimension 100, system dimension 145
- without: top

Model 4914.2

DN	CH	HD	PU	Article
50	85-120	✓	1	669 232

HD = Horizontal drain

ADVANTIX COMBINATION OVERVIEW

base unit

top frame

Advantix top frame rounded Model 4949.1

Advantix top frame angular Model 4962

Visign grates, angular

model 4932.2
usable without top frame

Visign grates, round

COMPOSE YOUR OWN SET.

Select products from the various sections, and source everything you need for your project.

ADVANTIX TOP FRAME



Advantix top frame
 ■ not suitable for Advantix grate Visign RS5 model 4976.20, 4976.21
 ■ system dimension 100
Model 4949.1

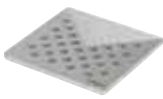
L	W	PU	Article
100	100	1	488 987 ¹



Advantix top frame
 ■ for Advantix grate round Ø 110 mm
 ■ system dimension 100
Model 4962

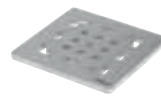
Ø	PU	Article
120	1	586 416

VISIGN GRATES, ANGULAR



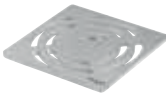
Advantix grate Visign RS1
 stainless steel 1.4301, solid,
 lasered inlet design, matt surface finish
Model 4928.1

L	W	H	PU	Article
94	94	5	1	492 281



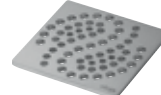
Advantix grate Visign RS2
 stainless steel 1.4301, solid,
 lasered inlet design, matt surface finish
Model 4928.2

L	W	H	PU	Article
94	94	5	1	492 298



Advantix grate Visign RS3
 stainless steel 1.4301, solid,
 lasered inlet design, matt surface finish
Model 4928.3

L	W	H	PU	Article
94	94	5	1	492 304



Advantix grate Visign RS4
Model 4928.4

L	W	H	PU	Article
94	94	5	1	492 311



Advantix grate Visign
 tempered glass (TG), stainless steel disc RS5

Model	L	CH	DN	Version	PU	Article
4976.10	94	94	5	clear/light grey glass	1	617 127
4976.11	94	94	5	clear/black glass	1	617 141



Advantix-Aufsatz tileable
 usable without top frame
Model 4932.2

L	W	PU	Article
100	100	1	709 112

VISIGN GRATES, ROUND



Advantix grate Visign RS11
 stainless steel 1.4301, solid,
 lasered inlet design, matt surface finish
Model 4962.1

Ø	H	PU	Article
110	5	1	586 423



Advantix grate Visign RS12
 stainless steel 1.4301, solid,
 lasered inlet design, matt surface finish
Model 4962.2

Ø	H	PU	Article
110	5	1	586 430



Advantix grate Visign RS13
 stainless steel 1.4301, solid,
 lasered inlet design, matt surface finish
Model 4962.3

Ø	H	PU	Article
110	5	1	586 447



Visign grate RS15
 tempered glass (TG), stainless steel disc

Model	Ø	CH	Version	PU	Article
4976.30	110	5	clear/light grey glass	1	617 165
4976.31	110	5	clear/black glass	1	617 189

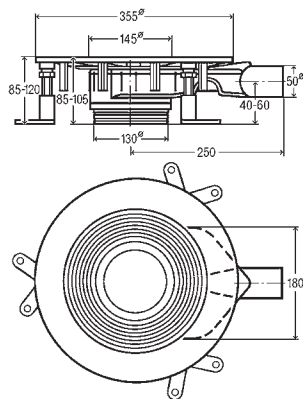
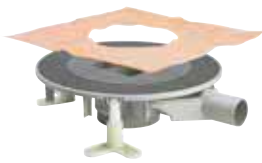


Viega Advantix floor drains

THE FLEXIBLE MODULAR SYSTEM FOR ALL FIELDS OF PLANNING.

For many decades now the Advantix product range has been continuously advanced by our engineers – with the outcome that the suitable drain can be offered for all planning interfaces.

ADVANTIX BASE UNIT



Advantix Top bath/floor drain base unit

- for bonded sealing (tiled shower) with sealing mat
- not suitable for Advantix stacking element model 4994
- system dimension 100, system dimension 145
- without: top

Model 4914.2

DN	CH	HD	PU	Article
50	85–120	✓	1	669 232

HD = Horizontal drain



Angular or round?
Choose the matching top frame and a grate on the right-hand side.

ADVANTIX TOP FRAME



Advantix-Aufsatzrahmen

- for Advantix grate 143x143 mm
- system dimension 145

Model 4949.3

L	W	PU	Article
150	150	1	488 994



Advantix-Aufsatzrahmen

- for Advantix grate round Ø 145 mm
- system dimension 145

Model 4963

Ø	PU	Article
155	1	586 409



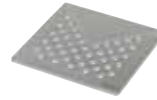
VISIGN GRATES, ANGULAR



Advantix grate
stainless steel 1.4301, drawn
Model 4933.4

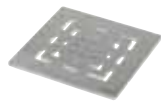
L	W	H	PU	Article
143	143	5	1	554 040¹
143	143	5	1	554 859²

¹⁾ non-screwable
²⁾ screwable



Advantix grate Visign RS1
stainless steel 1.4301, solid,
lasered inlet design, matt surface finish
Model 4929.1

L	W	H	PU	Article
143	143	5	1	492 328



Advantix grate Visign RS2
stainless steel 1.4301, solid,
lasered inlet design, matt surface finish
Model 4929.2

L	W	H	PU	Article
143	143	5	1	492 335



Advantix grate Visign RS3
stainless steel 1.4301, solid,
lasered inlet design, matt surface finish
Model 4929.3

L	W	H	PU	Article
143	143	5	1	492 342



Advantix grate Visign RS4
stainless steel 1.4301, solid,
lasered inlet design, matt surface finish
Model 4929.4

L	W	H	PU	Article
143	143	5	1	492 359



Advantix-Rost Visign RS5
tempered glass (TG), stainless steel disc

Model	L	W	H	Version	PU	Article
4976.20	143	143	5	clear/light grey glass	1	617 134*
4976.21	143	143	5	clear/black glass	1	617 158*

* = Discontinued, limited availability

VISIGN GRATES, ROUND



Advantix grate Visign RS11
stainless steel 1.4301, solid,
lasered inlet design, matt surface finish
Model 4963.1

Ø	H	PU	Article
145	5	1	586 669



Advantix-Rost Visign RS12
stainless steel 1.4301, solid,
lasered inlet design, matt surface finish
Model 4963.2

Ø	H	PU	Article
145	5	1	586 676*

* = Discontinued, limited availability



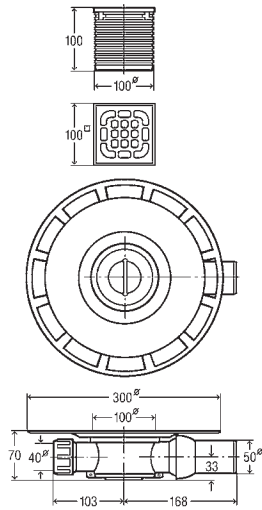
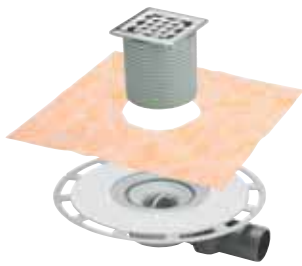
Advantix grate Visign RS15
tempered glass (TG), stainless steel disc
Model 4976.40

Ø	H	Version	PU	Article
145	5	clear/light grey glass	1	617 172*

* = Discontinued, limited availability



ADVANTIX BATH DRAINS



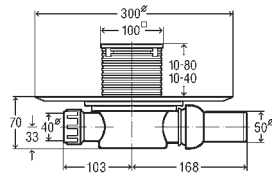
Advantix bath drain

- for bonded sealing (tiled shower) with sealing mat
- system dimension 100

Model 4939

DN	HD	PU	Article
50	✓	1	565 701

HD = Horizontal drain



Advantix bath drain

- for bonded sealing (tiled shower) with sealing mat
- system dimension 100, odour proof

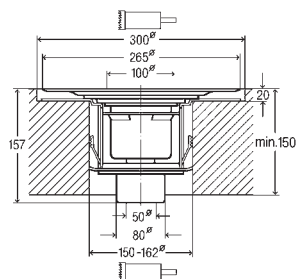
Model 4936.4

DN	HD	PU	Article
50	✓	1	583 231¹
50	✓	1	617 288²

HD = Horizontal drain

¹⁾ top with plastic frame

²⁾ top with frame made of stainless steel 1.4404



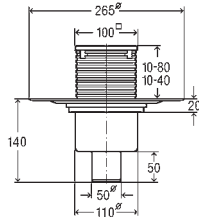
Advantix bath drain

- system dimension 100

Model 4926

DN	VD	PU	Article
50	✓	1	556 914

VD = Vertical drain



Advantix bath drain

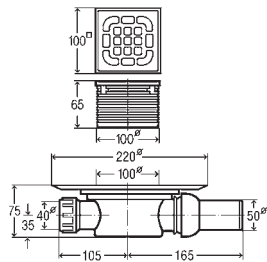
■ system dimension 100, odour proof
Model 4936.3

DN	VD	PU	Article
50	✓	1	583 224 ¹
50	✓	1	617 271 ²

VD = Vertical drain

¹) top with plastic frame

²) top with frame made of stainless steel 1.4404

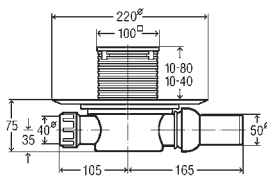


Advantix bath drain

■ system dimension 100
Model 4935.1

DN	HD	PU	Article
50	✓	1/10	557 119

HD = Horizontal drain



Advantix bath drain

■ system dimension 100, odour proof
Model 4936.2

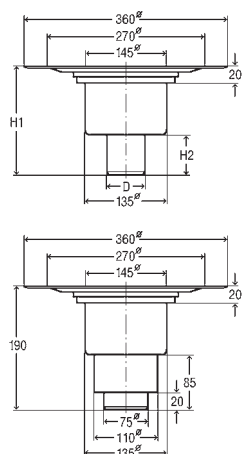
DN	Aw	PU	Article
50	✓	1	583 217 ¹
50	✓	1	583 248 ²

HD = Horizontal drain

¹) top with plastic frame

²) top with frame made of stainless steel 1.4404

ADVANTIX FLOOR DRAINS



Advantix floor drain

■ system dimension 145
Model 4951.1

DN	d	H1	H2	DC 10 [l/s]	DC 20 [l/s]	VD	PU	Article
50	50	160	50	0,65	1,5	✓	1	557 188
70	75	175	65	0,7	1,6	✓	1	557 195
70/ 100		190	85	0,9	1,4	✓	1	557 201

DC 10 = Drainage capacity accumulation height 10 mm

DC 20 = Drainage capacity accumulation height 20 mm

VD = Vertical drain



Viega bath drains

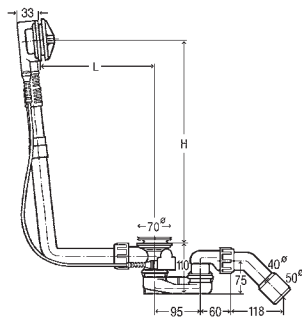
TIMELESS DESIGN, INNOVATIVE TECHNOLOGY.

Small construction heights, high-quality finish, excellent design and convincing performances are only a few of the properties meeting the high requirements on the functional bathtub drain sets in bathroom design.



Multiplex Trio MT5 with inlet function

MULTIPLEX



Multiplex drain/overflow

Visign M5

flat version; only 33 mm space required behind the bathtub

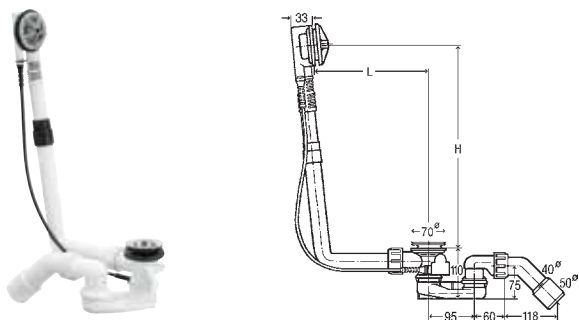
- chrome-plated rotatable rosette, chrome-plated drain plug, odour trap, drain elbow 45°, chrome-plated valve

Model 6162.45

DN	BZL	L	H	BS	BCC	B52	PU	Article
40/50	560	100-260	180-400	✓		✓	24	101 909

BCL = Bowden cable length; SB = Standard bathtub; BCC = Bathtub central connection; B52 = for bathtub with Ø 52 drain hole

MULTIPLEX FUNCTIONAL UNIT



Multiplex drain/overflow functional unit

flat version; only 33 mm space required behind the bathtub

- without: rotatable rosette, drain plug
- odour trap, drain elbow 45°, chrome-plated valve

Model	DN	BCL	L	H	SB	BCC	XLB	B52	PU	Article
6162.1	40/50	560	100–260	180–400	✓			✓	24	103 071
6163.1	40/50	725	130–370	180–430		✓		✓	5	111 069
6163.2	40/50	1070	130–680	180–480			✓	✓	10	308 889

BCL = Bowden cable length; SB = Standard bathtub; BCC = Bathtub central connection; XLB = Extra-long bathtub; B52 = for bathtub with Ø 52 drain hole

EQUIPMENT SETS FOR MULTIPLEX DRAIN/OVERFLOW



Multiplex equipment set Visign M5

- for drain/overflow functional unit
- rotatable rosette, drain plug

Model 6162.01

Version	PU	Article
chrome-plated plastic	10	721 244
chrome matt plastic	1	735 906
plastic stainless steel coloured brushed	1	735 890
plastic design white	1	735 883
plastic black matt	1	806 118
special colour plastic	1	765 873 ¹
metallic coloured plastic	1	765 880 ¹

¹) Delivery time for customised range: 10 weeks plus shipping; non-returnable!



Multiplex equipment set Visign M3

- for drain/overflow functional unit
- rotatable rosette, drain plug

Model 6154.0

Version	PU	Article
chrome-plated plastic	1	576 325
plastic design white	1	735 913
special colour plastic	1	765 910 ¹
metallic coloured plastic	1	765 927 ¹

¹) Delivery time for customised range: 10 weeks plus shipping; non-returnable!



Multiplex equipment set Visign M9

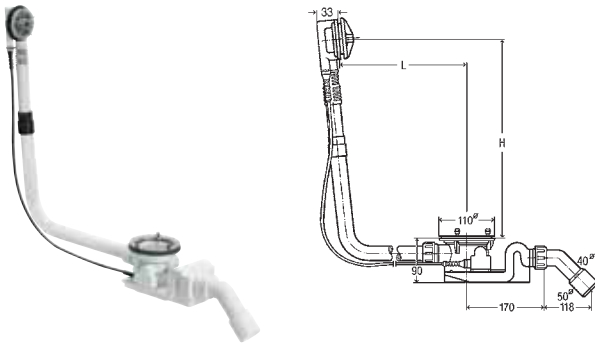
water level increase plus 5 cm

- for drain/overflow functional unit
- overflow rosette, rotatable rosette, fixing flange, drain plug

Model 6171.0

Version	PU	Article
chrome-plated	1	724 597

ROTAPLEX FUNCTIONAL UNIT



Rotaplex drain/overflow functional unit
flat version; only 33 mm space required behind the bathtub
 ■ without: rotatable rosette, cover plate
 ■ odour trap, drain elbow 45°

Model	DN	BCL	L	H	BCC	XLB	B90	PU	Article
6142.32	40/50	725	150–400	180–430	✓		✓	10	488 659
6142.33	40/50	1070	150–680	180–480		✓	✓	1	574 956

BCL = Bowden cable length; BCC = Bathtub central connection; XLB = Extra-long bathtub; B90 = for bathtub with Ø 90 drain hole

EQUIPMENT SETS FOR ROTAPLEX DRAIN/OVERFLOW



Rotaplex equipment set Visign R5
 ■ for drain/overflow functional unit
 ■ rotatable rosette, cover plate
Model 6142.01

Version	PU	Article
chrome-plated plastic	1	721 558
special colour plastic	1	773 397 ¹
metallic coloured plastic	1	773 403 ¹

¹⁾ Delivery time for customised range: 10 weeks plus shipping; non-returnable!

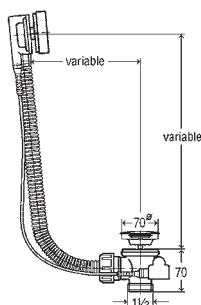


Rotaplex equipment set Visign R3
 ■ for drain/overflow functional unit
 ■ rotatable rosette, cover plate
Model 6156.0

Version	PU	Article
chrome-plated plastic	1	586 508
special colour plastic	1	773 427 ¹
metallic coloured plastic	1	773 434 ¹

¹⁾ Delivery time for customised range: 10 weeks plus shipping; non-returnable!

SIMPLEX



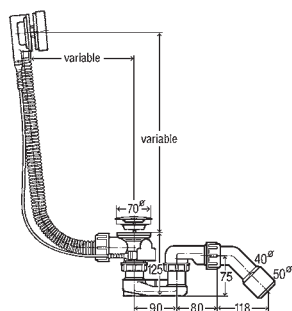
Simplex drain/overflow flat version; only 33 mm space required behind the bathtub

- without: odour trap
- flexible overflow pipe, chrome-plated rotatable rosette, chrome-plated drain plug, stainless steel valve

Model	G	BCL	SB	BCC	B52	PU	Article
6168.2	1½	560	✓		✓	25	133 825
6168.21	1½	725		✓	✓	25	595 685

BCL = Bowden cable length; SB = Standard bathtub; BCC = Bathtub central connection; B52 = for bathtub with Ø 52 drain hole

SIMPLEX



Simplex drain/overflow flat version; only 33 mm space required behind the bathtub

- flexible overflow pipe, chrome-plated rotatable rosette, chrome-plated drain plug, odour trap, drain elbow 45°, stainless steel valve

Model	DN	BCL	SB	BCC	B52	PU	Article
6168.45	40/50	560	✓		✓	25	285 357
6168.46	40/50	725		✓	✓	25	595 678

BCL = Bowden cable length; SB = Standard bathtub; BCC = Bathtub central connection; B52 = for bathtub with Ø 52 drain hole

EQUIPMENT FOR SIMPLEX DRAIN/OVERFLOW



Drain plug
 ■ for Multiplex, Multiplex Trio, Simplex
Model 6168-035

Version	PU	Article
chrome-plated	1	215 392



Simplex rosette
 ■ for series from 2009
Model 6168.02

Version	PU	Article
chrome-plated	1	657 406

i**ALL THE BENEFITS AT A GLANCE**

- Easy selection of design: one functional unit for all equipment sets
- Award-winning design
- Extremely flat design of the equipment sets Visign MT3 and MT5
- Additional water level raiser function with the equipment set Visign MT9
- With MT3 and MT5, water jet angle can be adjusted to the inclination of the individual tub rim
- Matches almost every type of bathtub thanks to small installation depth

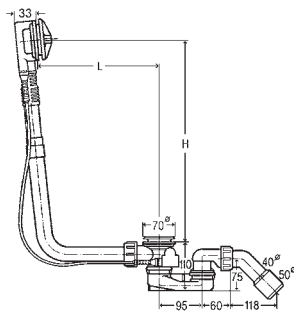
**An overview of the overflow raiser model:**

- Multiplex Visign M9 and Multiplex Trio Visign MT9 Chrom, sizes 560 mm, 725 mm and 1,070 mm
- Reconstruction set Multiplex Visign M9, for modifying the existing Multiplex to water level raiser function
- Reconstruction set Multiplex Trio Visign MT9, for modifying the existing Multiplex Trio to water level raiser function



Fig. 1: Without overflow raiser function, the water flows off directly at the bottom of the drain.

Fig. 2: With overflow raiser function, the water initially flows off at the top; the tub filling height is increased by 5 cm.

MULTIPLEX TRIO FUNCTIONAL UNIT**Multiplex Trio drain/overflow functional unit**

flat version; only 33 mm space required behind the bathtub

- for water inlet through the overflow unit
- without: rotatable rosette, overflow rosette, drain plug
- inlet flange, odour trap, drain elbow 45°, chrome-plated valve

Model	DN	BCL	L	H	SB	BCC	XLB	B52	PU	Article
6161.52	40/50	560	100–260	180–400	✓			✓	10	725 778
6161.62	40/50	725	130–370	180–430		✓		✓	5	727 970
6161.72	40/50	1070	130–680	180–480			✓	✓	10	727 987

BCL = Bowden cable length, SB = Standard bathtub, BCC = Bathtub central connection, XLB = Extra-long bathtub, B52 = for bathtub with Ø 52 drain hole

EQUIPMENT SETS FOR MULTIPLEX TRIO DRAIN/OVERFLOW

**Multiplex Trio equipment set Visign MT5**

- for drain/overflow functional unit
- suitable for Multiplex Trio drain/overflow functional unit model 6161.52, 6161.62, 6161.72
- rotatable rosette, overflow rosette, drain plug

Model 6161.01

Version	PU	Article
chrome-plated plastic	10	725 785
plastic black matt	1	806 125
chrome matt plastic	1	732 486
plastic polished brass	1	732 493
plastic stainless steel coloured brushed	1	732 509
plastic design white	1	725 815
special colour plastic	1	766 474¹
metallic coloured plastic	1	766 481¹

¹⁾ Delivery time for customised range: 10 weeks plus shipping; non-returnable!

**Multiplex Trio equipment set Visign MT3**

- for drain/overflow functional unit
- suitable for Multiplex Trio drain/overflow functional unit model 6161.52, 6161.62, 6161.72
- rotatable rosette, overflow rosette, drain plug

Model 6161.13

Version	PU	Article
chrome-plated plastic	1	725 792
plastic design white	1	725 822
special colour plastic	1	766 504¹
metallic coloured plastic	1	766 511¹

¹⁾ Delivery time for customised range: 10 weeks plus shipping; non-returnable!

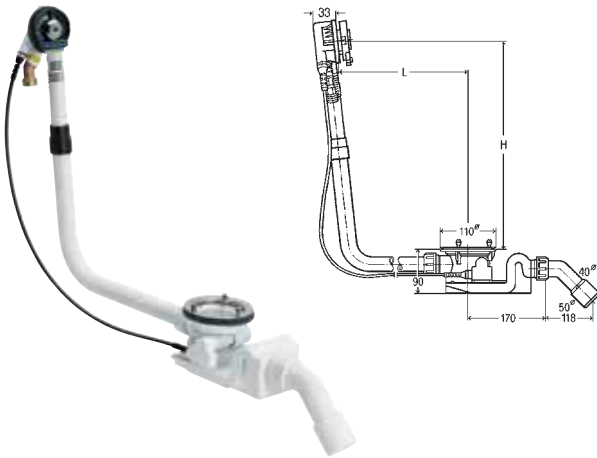
**Multiplex Trio equipment set Visign MT9
water level increase plus 5 cm**

- for drain/overflow functional unit
- suitable for Multiplex Trio drain/overflow functional unit model 6161.52, 6161.62, 6161.72
- overflow rosette, rotatable rosette, fixing flange, drain plug

Model 6170.0

Version	PU	Article
chrome-plated plastic	1	724 580

ROTAPLEX TRIO FUNCTIONAL UNIT



Rotaplex Trio drain/overflow functional unit

flat version; only 33 mm space required behind the bathtub

- for water inlet through the overflow unit
- without: rotatable rosette, cover plate, overflow rosette
- inlet flange, odour trap, drain elbow 45°

Model	DN	BCL	L	H	BCC	XLB	B90	PU	Article
6141.62	40/50	725	150–400	180–430	✓		✓	10	727 949
6141.72	40/50	1070	150–680	180–480		✓	✓	1	727 956

BCL = Bowden cable length; BCC = Bathtub central connection; XLB = Extra-long bathtub; B90 = for bathtub with Ø 90 drain hole

EQUIPMENT SETS FOR ROTAPLEX TRIO DRAIN/OVERFLOW



Rotaplex Trio equipment set Visign RT5

- for drain/overflow functional unit
- rotatable rosette, overflow rosette, cover plate

Model 6141.01

Version	PU	Article
chrome-plated plastic	1	732 530
plastic stainless steel coloured brushed	1	732 547
plastic design white	1	732 523
special colour plastic	1	773 113 ¹
metallic coloured plastic	1	773 120 ¹

¹⁾ Delivery time for customised range: 10 weeks plus shipping; non-returnable!



Rotaplex Trio equipment set Visign RT3

- for drain/overflow functional unit
- rotatable rosette, overflow rosette, cover plate

Model 6141.02

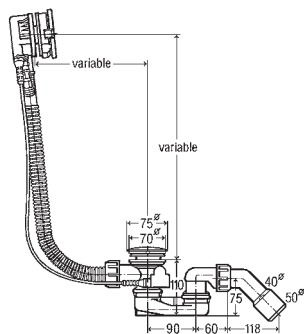
Version	PU	Article
chrome-plated plastic	1	734 107
special colour plastic	1	773 144 ¹
metallic coloured plastic	1	775 056 ¹

¹⁾ Delivery time for customised range: 10 weeks plus shipping; non-returnable!



Less is more.
Trio with water inlet through the overflow unit.

SIMPLEX TRIO



Simplex Trio drain/overflow

Visign MT5

- for water inlet through the overflow unit
- flexible overflow pipe, chrome-plated rotatable rosette, chrome-plated drain plug, odour trap, drain elbow 45°, stainless steel valve

Model	DN	BCL	SB	BCC	B52	PU	Article
6166.41	40/50	560	✓		✓	10	728 007
6166.42	40/50	725		✓	✓	10	728 014

BCL = Bowden cable length; SB = Standard bathtub; BCC = Bathtub central connection; B52 = for bathtub with Ø 52 drain hole

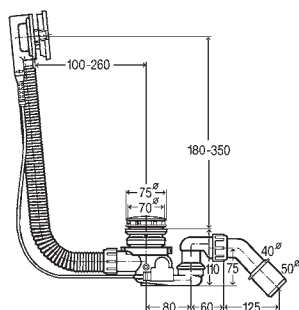
Viega Multiplex Trio F

NEAR-SILENT BATH FILLING FOR MAXIMUM COMFORT.

Multiplex Trio F is not only a real eye-catcher. It can also be hardly heard thanks to the innovative step of filling the bath from the bottom upwards. Inlet and drain are separate from each other and have backflow protection and a DVGW-certified pipe interrupter.



MULTIPLEX TRIO F



Multiplex Trio F drain/overflow flat version; only 33 mm space required behind the bathtub

- for water inlet through the drain unit
- rotatable rosette Visign M5, chrome-plated cover plate, inlet element, odour trap, drain elbow 45°, concealed pipe interrupter DN20, DIN EN 1717 safety device DB, with rosette RU2

Model	DN	BCL	L	H	SB	BCC	XLB	B52	PU	Article
6145.4	40/50	560	100-260	180-350	✓			✓	1	672 027
6145.5	40/50	725	130-370	180-370		✓		✓	1	675 462
6145.6	40/50	1070	130-680	180-430			✓	✓	1	675 479

BCL = Bowden cable length; SB = Standard bathtub; BCC = Bathtub central connection; XLB = Extra-long bathtub; B52 = for bathtub with Ø 52 drain hole

Viega Multiplex Trio E

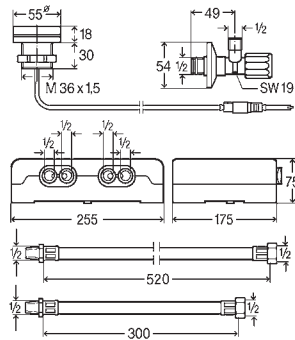
FULLY AUTOMATIC FOR TOTAL RELAXATION.

The Internet of Things enters into the bathroom with Viega Multiplex Trio E. The intelligent control element can be controlled via WLAN and Internet suggesting risk driving safety? Simply by smartphone, tablet, PC or notebook.



ALL THE BENEFITS AT A GLANCE

- Remote-controllable by smartphone, tablet, PC or notebook
- Large scope to implement design ideas – the visible part of the operating unit requires only small space
- Mounting on the bathtub rim or on the wall using the extension set
- Fully automatic control of water temperature, inlet volume, fill level – even from the road
- Memory function to save individual settings
- Automatic filling of the bathtub when calling-up the memory function
- Particularly safe thanks to the active overflow protection
- “Invisible” arrangement on mixing technology

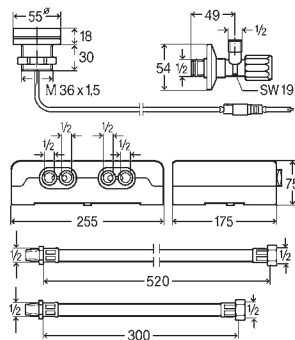


**Multiplex Trio E fitting
electronic mixing unit**

- for filling of a bathtub (electronically controlled), in connection with Multiplex Trio, Multiplex Trio F or Rotaplex Trio (optional electric driven)
- in addition optional available Multiplex Trio E WLAN module model 6146.224
- electrical opening/closing function of Viega drain set, remote-controlled operation via mobile devices (Android, iOS, Windows) in direct operation or Internet with Multiplex Trio E-WLAN module

Model 6146

	PU	Article
	1	662 295

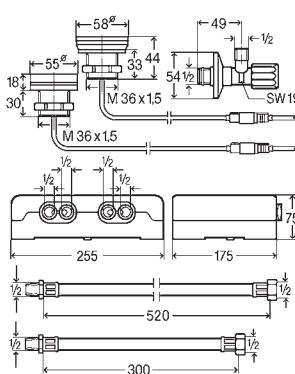


**Multiplex Trio E2 fitting
electronic mixing unit**

- for filling of a bathtub (electronically controlled), in connection with Multiplex Trio, Multiplex Trio F or Rotaplex Trio (optional electric driven)
- in addition optional available Multiplex Trio E WLAN module model 6146.224
- electrical opening/closing function of Viega drain set, remote-controlled operation via mobile devices (Android, iOS, Windows) in direct operation or Internet with Multiplex Trio E-WLAN module

Model 6146.2

	PU	Article
	1	682 972



**Multiplex Trio E3 fitting
electronic mixing unit**

- for filling of a bathtub (electronically controlled), in connection with Multiplex Trio, Multiplex Trio F or Rotaplex Trio (optional electric driven)
- in addition optional available Multiplex Trio E WLAN module model 6146.224
- electrical opening/closing function of Viega drain set, remote-controlled operation via mobile devices (Android, iOS, Windows) in direct operation or Internet with Multiplex Trio E-WLAN module

Model 6146.215

	PU	Article
	1	684 655



Multiplex Trio E WLAN module

- for remote-controlled operation of Multiplex Trio E via mobile devices (Android, iOS, Windows) in direct operation or Internet
- suitable for Multiplex Trio E fitting model 6146, Multiplex Trio E2 fitting model 6146.2, Multiplex Trio E3 fitting model 6146.215
- no app needed, as operation occurs by Browser (Safari, Internet Explorer, Chrome, Firefox) of mobile devices

Model 6146.224

	PU	Article
	1	708 870



ALL THE BENEFITS AT A GLANCE

- Premium quality
- Sophisticated design
- Removable odour trap with cover plate
- The drains are also perfect for flat shower trays

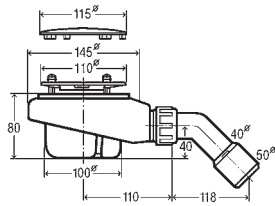


Viega shower tray sets

MEETING HIGHEST DEMANDS ON DESIGN AND DRAINAGE CAPACITY.

The trend towards rain sky, flood and XXL showerheads continues. No problem for shower tray sets with a drainage capacity of up to 100% above standard. The high-quality manufactured design cover plates, being robust and having received multiple awards, make recent bathroom design child's play.

TEMPOPLEX DRAIN WITH COVER PLATE



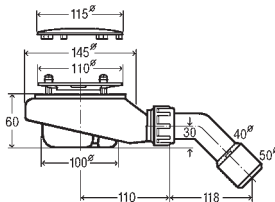
Tempoplex drain

■ chrome-plated cover plate, removable odour trap, drain elbow 45°

Model 6961

Ø	H	DN	D90	PU	Article
115	80	40/50	✓	1/10	575 601

D90 = for shower trays with Ø 90 drain hole



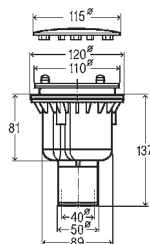
Tempoplex drain CH 60 mm

■ chrome-plated cover plate, removable odour trap, drain elbow 45°

Model 6963

Ø	H	DN	D90	PU	Article
115	60	40/50	✓	1/10	634 100

D90 = for shower trays with Ø 90 drain hole



Tempoplex drain

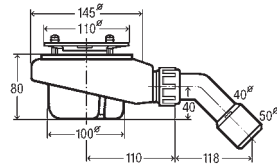
■ chrome-plated cover plate, removable odour trap, vertical drain pipe, minimum drill hole Ø 120 mm

Model 6965

Ø	H	DN	D90	PU	Article
115	81	40/50	✓	1/10	801 786

D90 = for shower trays with Ø 90 drain hole

TEMPOPLEX FUNCTIONAL UNIT



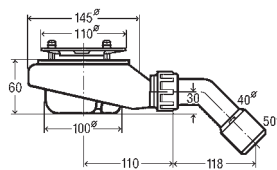
Tempoplex drain functional unit

- without: cover plate
- removable odour trap, drain elbow 45°

Model 6961.1

DN	H	D90	PU	Article
40/50	80	✓	1/10	575 625

D90 = for shower trays with Ø 90 drain hole



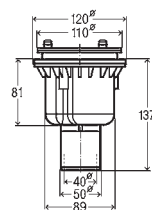
Tempoplex drain functional unit, CH 60 mm

- without: cover plate
- removable odour trap, drain elbow 45°

Model 6963.1

DN	H	D90	PU	Article
40/50	60	✓	1/10	634 117

D90 = for shower trays with Ø 90 drain hole



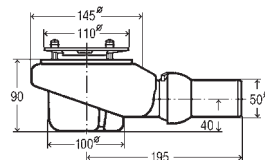
Tempoplex drain functional unit

- without: cover plate
- removable odour trap, vertical drain pipe, minimum drill hole Ø 120 mm

Model 6965.1

Ø	H	DN	D90	PU	Article
115	81	40/50	✓	1/10	801 793

D90 = for shower trays with Ø 90 drain hole



Tempoplex Plus drain functional unit

high drainage capacity

- without: cover plate
- removable odour trap, height-adjustable horizontal drain pipe with ball joint

Model 6960.1

DN	Ø	H	D90	PU	Article
50	115	90	✓	1	578 916

D90 = for shower trays with Ø 90 drain hole



Cover plate

for functional unit, Tempoplex, Tempoplex Plus, Tempoplex 60 mm

Model 6964.0

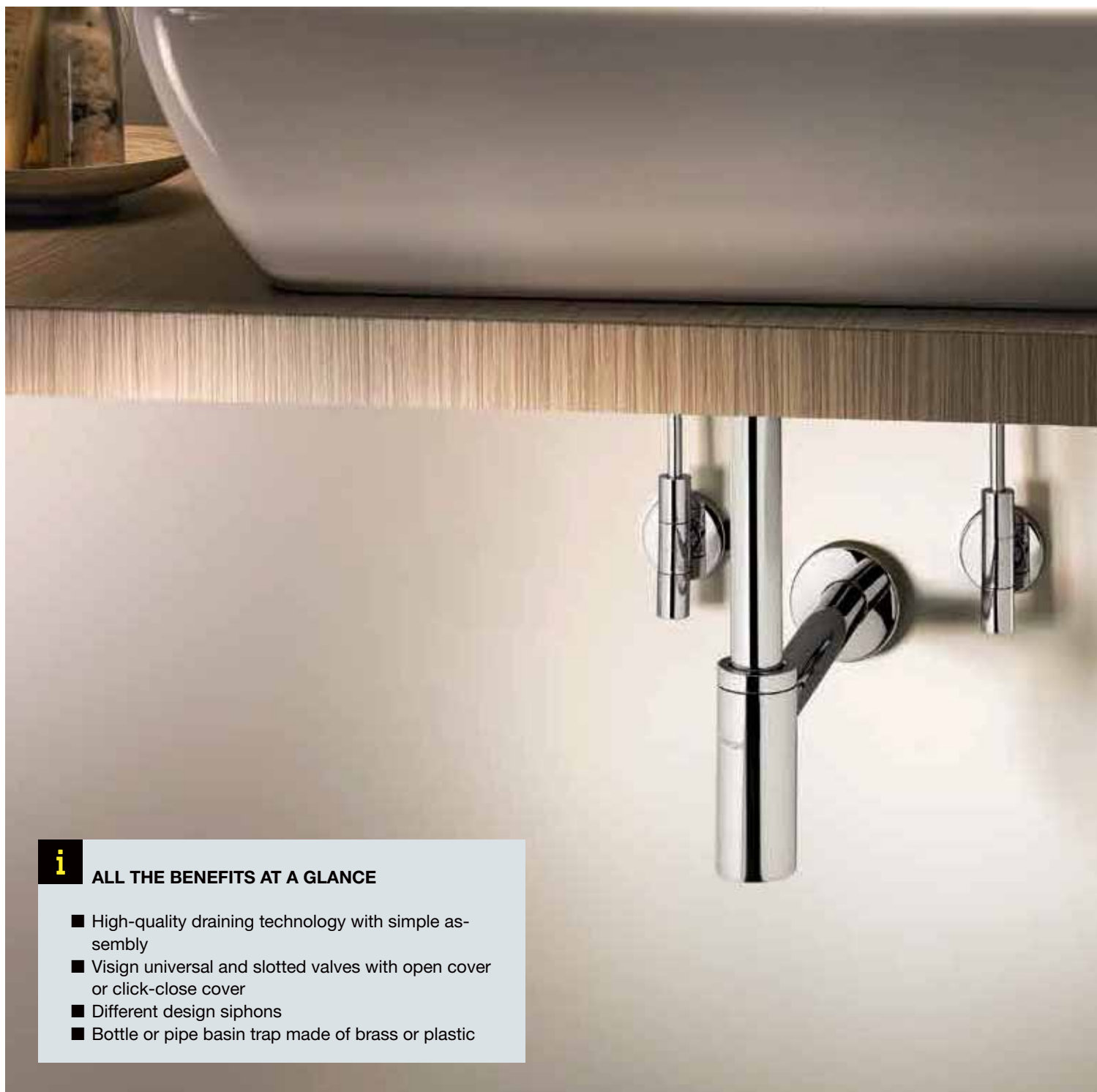
Version	PU	Article
chrome-plated plastic	5	649 982
plastic black matt	1	806 132
special colour plastic	1	775 070 ¹
metallic coloured plastic	1	775 087 ¹

¹⁾ Delivery time for customised range: 10 weeks plus shipping; non-returnable!

Viega drains for washbasins

DESIGN AND TECHNOLOGY KNOWING ALL THE INS AND OUTS.

Whether the shapely Eleganta series, or the well-conceived bottle basin traps – their attractive design makes them true eye-catchers. But true to the well-known Viega style, classical functional fittings are characterised not only by their appealing contours but also by excellent technical properties.

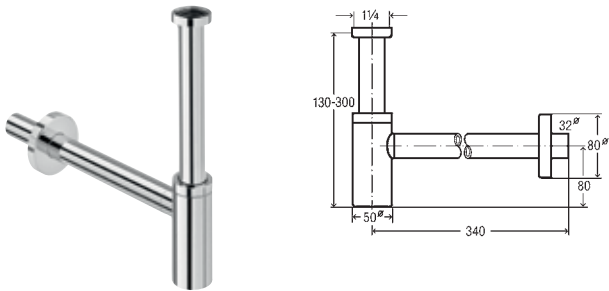


i

ALL THE BENEFITS AT A GLANCE

- High-quality draining technology with simple assembly
- Visign universal and slotted valves with open cover or click-close cover
- Different design siphons
- Bottle or pipe basin trap made of brass or plastic

ODOUR TRAPS

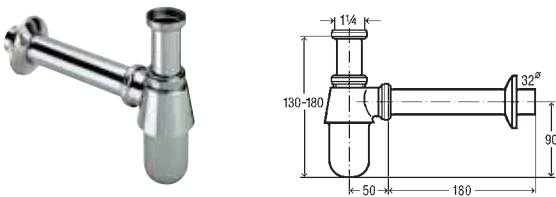


Eleganta bottle odour trap

- chrome-plated brass
- adjusting pipe 200 mm, drain pipe 310 mm, rosette Ø32xØ80xH15 mm

Model 5788

G	DN	PU	Article
1/4	32	1	440 190

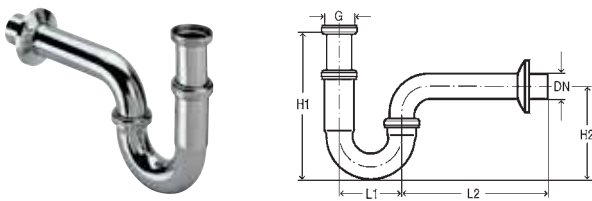


Bottle odour trap

- brass
- cup Ø 50 mm, adjusting pipe 75 mm, drain pipe 200 mm

Model 5753

G	DN	Version	PU	Article
1/4	32	chrome-plated	25	100 674



Pipe odour trap

- chrome-plated brass

Model 5611

G	DN	d	L1	L2	H1	H2	PU	Article
1/4	32		75	170	140-190	110	50	305 611
1/4		38	85	200	160-220	125	1	123 451
1/4		38	85	200	140-200	125	1	122 515

UNIVERSAL VALVES

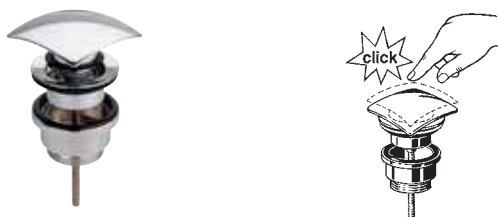


Universal valve Visign V1

- chrome-plated brass
- lockable

Model 5439

G	Ø	PU	Article
1/4	63	1	492 687



Universal valve Visign V2

- chrome-plated brass
- lockable

Model 5441

G	Ø	PU	Article
1/4	63	1	492 809

SG 816 254-7/21 · We reserve the right to effect changes.



Viega South East Asia Pte. Ltd.

Howard Tan
28 Sin Ming Lane #03-146
573972 Singapore

Phone: +65 (0) 9745 9355

howard.tan@viega.de

